

## 4 Retreat Court, St. Columb, Cornwall TR9 6AD



Ground floor 2 bedroom apartment in character Listed Building on the edge of St Columb Major.

**£895 PCM**





To arrange a viewing on this or any of our other properties please complete the Tenancy Application Form on the Start and Co home page at [starts.co.uk](http://starts.co.uk).

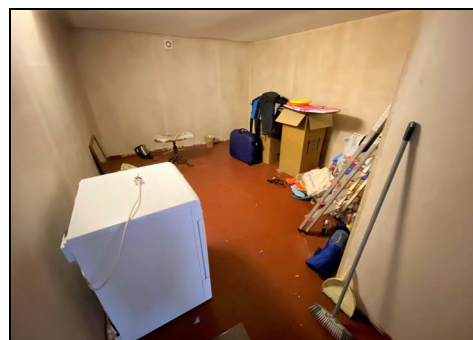
Energy Efficiency Rating		Current	Potential
Very energy efficient - lower running costs			
(92 plus) <b>A</b>			
(81-91) <b>B</b>			
(69-80) <b>C</b>			<b>75</b>
(55-68) <b>D</b>			
(39-54) <b>E</b>		<b>46</b>	
(21-38) <b>F</b>			
(1-20) <b>G</b>			
Not energy efficient - higher running costs			

**England & Wales**

EU Directive  
2012/91/EC



Environmental Impact (CO <sub>2</sub> ) Rating		Current	Potential
<i>Very environmentally friendly - lower CO<sub>2</sub> emissions</i> (92 plus) <b>A</b> (81-91) <b>B</b> (69-80) <b>C</b> (55-68) <b>D</b> (39-54) <b>E</b> (21-38) <b>F</b> (1-20) <b>G</b>			
<i>Not environmentally friendly - higher CO<sub>2</sub> emissions</i>			
<b>England &amp; Wales</b>		EU Directive 2002/91/EC	



# Start & co

12a Cliff Road  
Newquay  
TR7 2NE  
Tel: 01637 875847  
sales@starts.co.uk