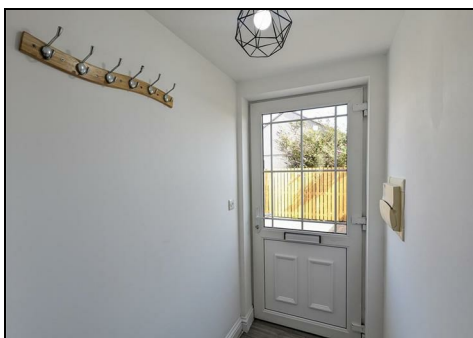


## 1 Chegwin Court, Newquay, TR7 2DE



Ground Floor 2 Bedroom Apartment in Central Newquay.

**£950 Per Month**



The property is unfurnished and is available from now for 12 months. The deposit is equivalent to 1 month's rent.

To arrange a viewing on this or any of our other properties please complete the Tenancy Application Form on the Start and Co home page at [www.starts.co.uk](http://www.starts.co.uk).

Energy Efficiency Rating			Environmental Impact (CO <sub>2</sub> ) Rating		
		Potential			Potential
Very energy efficient - lower running costs			Very environmentally friendly - lower CO <sub>2</sub> emissions		
(92 plus) A			(92 plus) A		
(81-91) B			(81-91) B		
(69-80) C			(69-80) C		
(55-68) D			(55-68) D		
(39-54) E			(39-54) E		
(21-38) F			(21-38) F		
(1-20) G			(1-20) G		
Not energy efficient - higher running costs			Not environmentally friendly - higher CO <sub>2</sub> emissions		
England & Wales		EU Directive 2002/91/EC	England & Wales		EU Directive 2002/91/EC

