

28 Coastline Court, Watergate Road, Newquay, Cornwall TR7 3LX



NO ONWARD CHAIN | CLOSE TO PORTH BEACH | First floor 2 bedroom apartment in popular block, with designated parking, located 500 yards from Porth beach

- 2 double bedroom first floor apartment
- Designated parking space
- Approx 509 sq ft
- Use of communal outdoor swimming pool
- Vacant possession – no onward chain
- Ideal buy to let investment
- Gas central heating and double glazing
- Short stroll to popular family beaches
- Communal surfboard store

Price £235,000 Leasehold

Located in the very popular residential and holiday area of Porth, this property is located just 200 yards from the beach. Within walking distance are 4 very popular beaches including Lusty Glaze, Porth, Whipsiderry and Watergate Bay with the North Cornish Coastal path right on the doorstep. Newquay Town is approximately 2 miles from the property and offers multiple bars and restaurants with all the expected shopping, schools and amenities of a larger town.

HALLWAY

9'2 x 3'2 (2.79m x 0.97m)

LIVING AREA

11'10 x 10'10 (3.61m x 3.30m)

KITCHEN

12'5 x 6'8 (3.78m x 2.03m)

BEDROOM

10'10 x 9'11 (3.30m x 3.02m)

BEDROOM

9'11 x 8'10 (3.02m x 2.69m)

BATHROOM

8'9 x 4'5 (2.67m x 1.35m)

OUTSIDE

Designated parking space and use of the communal residents swimming pool.

TENURE

Leasehold. 999 year lease. The current service charge is £85 a month to include buildings insurance. There is currently no ground rent chargeable on the property. Pets and holiday lets are permitted within the development.

SERVICES

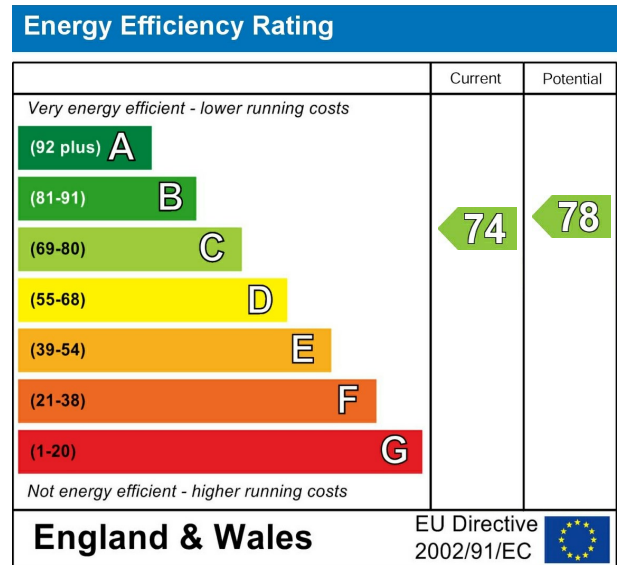
All mains

COUNCIL TAX

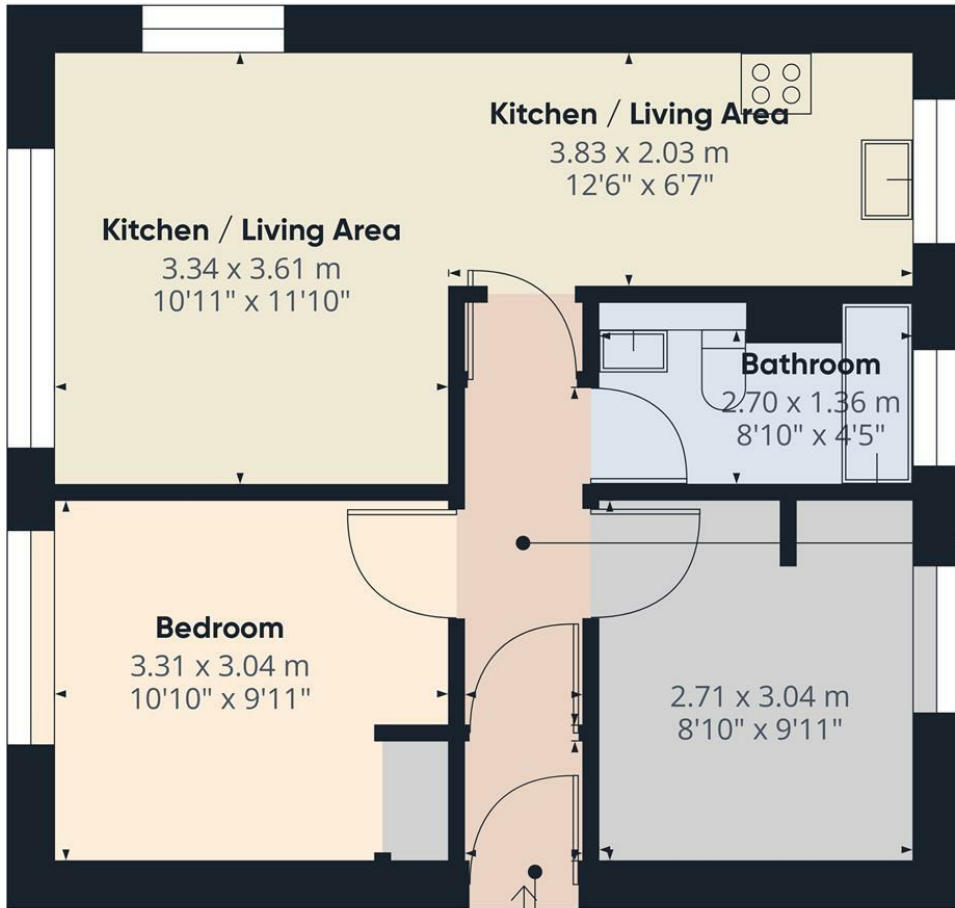
Band A

BROADBAND AND MOBILE COVERAGE AVAILABILITY

Fastest available download speed: Up to 64Mbps
 Mobile Coverage: Likely/limited
 (Source: OFCOM)







Hallway
0.98 x 1.12 m
3'2" x 3'7"

Hallway
0.95 x 2.80 m
3'1" x 9'2"

Approximate total area⁽¹⁾
47.35 m²
509.64 ft²

(1) Excluding balconies and terraces

While every attempt has been made to ensure accuracy, all measurements are approximate, not to scale. This floor plan is for illustrative purposes only.

GIRAFFE 360

Start & co

THE NEWQUAY ESTATE AGENT
www.starts.co.uk

12a Cliff Road
Newquay
TR7 2NE
Tel: 01637 875847
sales@starts.co.uk