

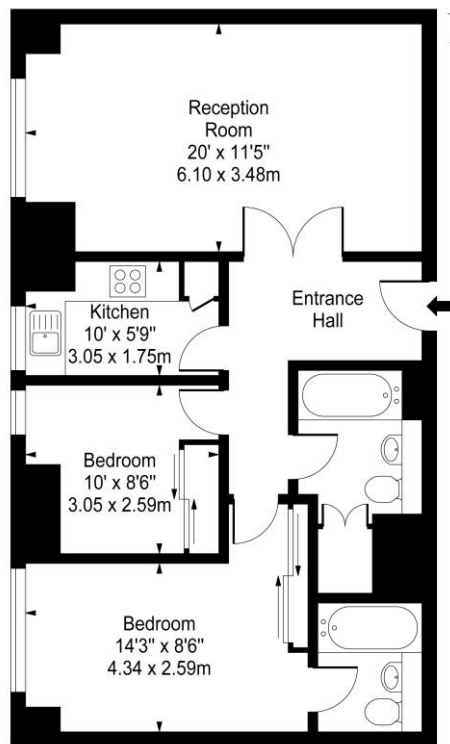


2 Bed 2 Bath Flat
Shoot Up Hill
London NW2

- Two double bedrooms
- Private Gym
- Modern purpose built block
- Tenants Only Swimming Pool

Price: £500 pw / £2,166.67 pcm

Jubilee Heights, NW2



Fourth Floor

Approx Gross Internal Area **711 Sq Ft - 66.05 Sq M**

For Illustration Purposes Only - Not To Scale
www.tomekphotography.co.uk



Energy Efficiency Rating		
	Current	Potential
Very energy efficient - lower running costs		
(92-100) A		
(81-91) B		
(69-80) C		
(55-68) D		
(39-54) E		
(21-38) F		
(1-20) G		
Not energy efficient - higher running costs		
England, Scotland & Wales	EU Directive 2002/91/EC	

We are delighted to present this bright and spacious two-double-bedroom apartment arranged on the fourth floor and offering approximately 711 sq ft of modern living space. Set within the prestigious Jubilee Heights development directly opposite Kilburn Tube Station, this property combines comfort, convenience, and exceptional on-site amenities. The apartment features two generous double bedrooms, two contemporary bathrooms including one ensuite, a spacious reception room, and a luxury fitted kitchen complete with full appliances, including a dishwasher. Stylish wood flooring enhancing the clean and modern feel of the home. The property is offered part-furnished. Residents of Jubilee Heights benefit from a 24-hour porter, Lifts, a well-maintained private gym, tenants-only swimming pool and jacuzzi, and covered bicycle storage-all adding to the appeal of this sought-after development. Ideally located adjacent to Kilburn Jubilee Line Station and within easy reach of Brondesbury Overground, as well as multiple bus routes, the property provides excellent transport links across London. A wide selection of restaurants, bars, cafés, and gastropubs are right on your doorstep, making this an exceptional spot for vibrant city living. Available now, this property is perfect for professional sharers seeking quality accommodation with premium facilities in a fantastic location.

ML Estates wish to advise prospective purchasers that we have not checked the services or appliances. These particulars have been prepared as a guide only, any floor-plan or map is for illustrative purposes only. ML Estates, for themselves and for the vendors or lessors of this property whose agents they are given notice that: the particulars have been produced in good faith; do not constitute any part of a contract; no person in the employment of ML Estates has any authority to make or give any representation of warranty in relation to this property.