

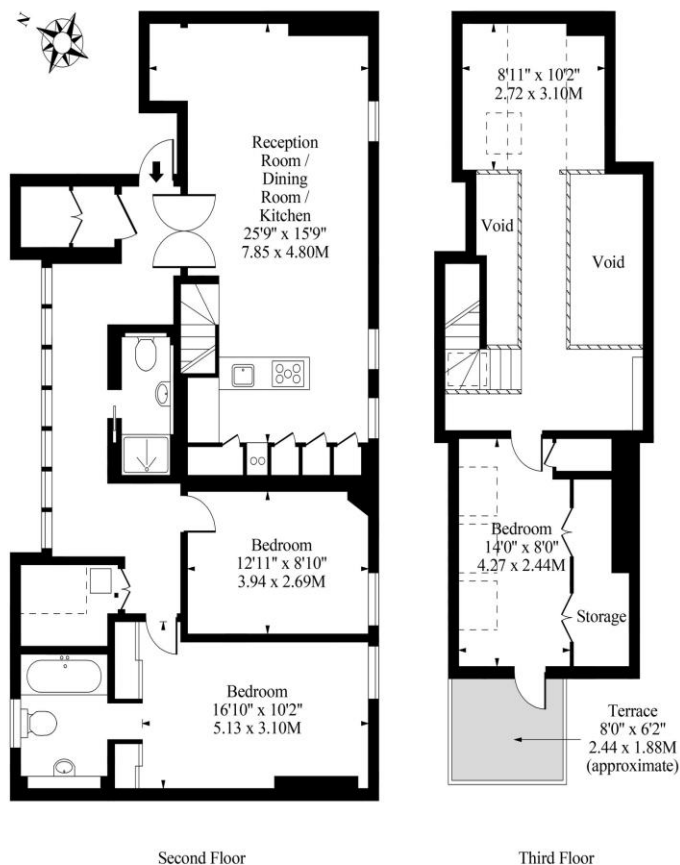


3 Bed 2 Bath Flat  
Shroton Street  
London NW1

- Three Double Bedrooms
- Two Bathrooms
- Extremely High Ceilings
- Private Roof Terrace

Price: £1,050 pw / £4,550.00 pcm

## Shroton Street NW1



Second Floor

Third Floor

Approx Gross Internal Area 1490 Sq Ft - 138.42 Sq M

Measured in accordance with RICS guidelines. Every attempt is made to ensure accuracy. However all measurements are approximate. The floor plan is illustrative purposes only and is not to scale



Environmental Impact (CO <sub>2</sub> ) Rating		
	Current	Potential
Very environmentally friendly - lower CO <sub>2</sub> emissions		
(92-100) <b>A</b>		
(81-91) <b>B</b>		
(69-80) <b>C</b>		
(55-68) <b>D</b>		
(39-54) <b>E</b>		
(21-38) <b>F</b>		
(1-20) <b>G</b>		
Not environmentally friendly - higher CO <sub>2</sub> emissions		
England, Scotland & Wales		EU Directive 2002/91/EC

Energy Efficiency Rating		
	Current	Potential
Very energy efficient - lower running costs		
(92-100) <b>A</b>		
(81-91) <b>B</b>		
(69-80) <b>C</b>		
(55-68) <b>D</b>		
(39-54) <b>E</b>		
(21-38) <b>F</b>		
(1-20) <b>G</b>		
Not energy efficient - higher running costs		
England, Scotland & Wales		EU Directive 2002/91/EC

Immaculately presented three double bedroom two bathroom property situated on the Second and Third floors of a Period Conversion located on the edge of Marylebone, NW1 and set very close to BNP Paribas. Regent's Park and Central London are within 10 minutes walk from the property in addition to London Business School which is a stone-throw away. This unique property offers a contemporary loft style open-plan living space with original exposed wooden beams, vaulted ceilings, wood flooring, carpeted bedrooms and sash windows and a private roof terrace. The integrated fitted kitchen includes a dishwasher and dining area. The principle bedroom suite offers fitted wardrobes and ensuite bathroom, second double bedroom, shower room, utility room and modern furnishings. Avail. 15th Oct.

ML Estates wish to advise prospective purchasers that we have not checked the services or appliances. These particulars have been prepared as a guide only, any floor-plan or map is for illustrative purposes only. ML Estates, for themselves and for the vendors or lessors of this property whose agents they are given notice that: the particulars have been produced in good faith; do not constitute any part of a contract; no person in the employment of ML Estates has any authority to make or give any representation of warranty in relation to this property.