

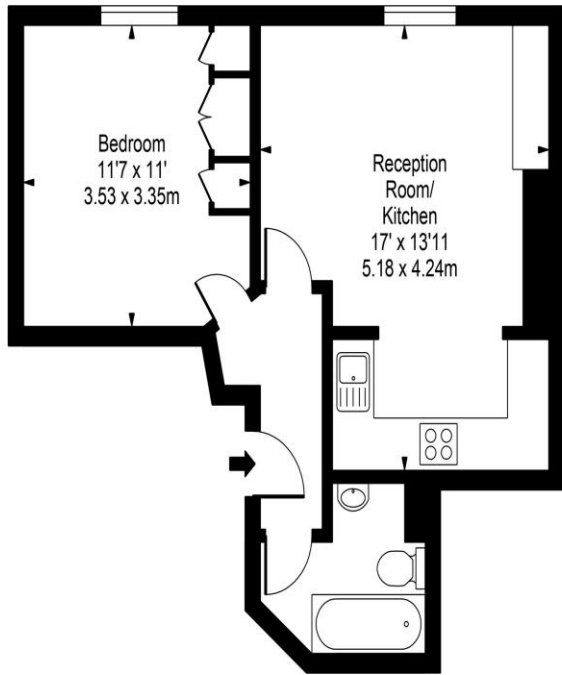
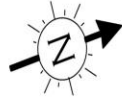


1 Bedroom Flat
Parliament Hill
London NW3

- Period Conversion
- Wood Floors
- Tax Band D
- Excellent Condition

Price: £475,000

Parliament Hill, NW3



Second Floor

Approx Gross Internal Area **428 Sq Ft - 39.76 Sq M**

For Illustration Purposes Only - Not To Scale
www.tomekphotography.co.uk



This stylish ONE DOUBLE BEDROOM second floor apartment (428 sq ft.) offers ample living space and a sought-after location moments from Primrose Hill on the Hampstead Heath extension, in a scenic residential area. Comprising a bright and spacious reception room with open-plan fitted kitchen, generous bedroom, fully tiled bathroom with wc with views over the rear garden. Parliament Hill is a popular area close to the shops, bars and restaurants of Pond Street, Belsize Park and Hampstead High Street & Belsize Park tube (Northern Line) is close by. 92 Years remaining on the lease.

Environmental Impact (CO ₂) Rating		
	Current	Potential
Very environmentally friendly - lower CO ₂ emissions		
(92-100) A		
(81-91) B		83
(69-80) C		
(55-68) D	68	
(39-54) E		
(21-38) F		
(1-20) G		
Not environmentally friendly - higher CO ₂ emissions		
England, Scotland & Wales		EU Directive 2002/91/EC
Energy Efficiency Rating		
	Current	Potential
Very energy efficient - lower running costs		
(92-100) A		
(81-91) B		79
(69-80) C		
(55-68) D	68	
(39-54) E		
(21-38) F		
(1-20) G		
Not energy efficient - higher running costs		
England, Scotland & Wales		EU Directive 2002/91/EC

ML Estates wish to advise prospective purchasers that we have not checked the services or appliances. These particulars have been prepared as a guide only, any floor-plan or map is for illustrative purposes only. ML Estates, for themselves and for the vendors or lessors of this property whose agents they are given notice that: the particulars have been produced in good faith; do not constitute any part of a contract; no person in the employment of ML Estates has any authority to make or give any representation of warranty in relation to this property.