



1 Bedroom Flat  
Belsize Road  
London NW6

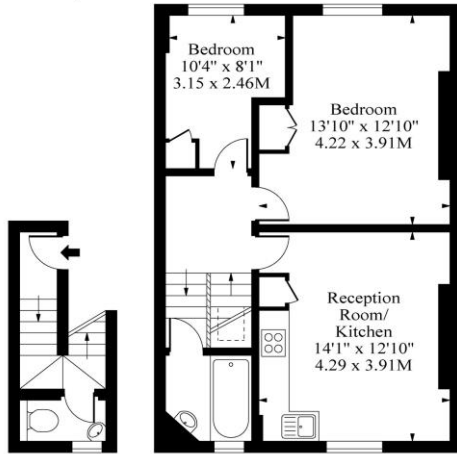
- Top Floor
- One Double Principal bedroom and Home Office Room

- Victorian Conversion
- Open Plan Fitted

Price: £415.38 pw / £1,800 pcm



### Belsize Road NW6



Second Floor

Approx Gross Internal Area 598 Sq Ft - 55.57 Sq M

Measured in accordance with RICS guidelines. Every attempt is made to ensure accuracy However all measurements are approximate. The floor plan is illustrative purposes only and is not to scale  
[www.tomelkphotography.co.uk](http://www.tomelkphotography.co.uk)



Energy Efficiency Rating		
	Current	Potential
<i>Very energy efficient - lower running costs</i>		
(92-100) <b>A</b>		
(81-91) <b>B</b>		
(69-80) <b>C</b>		<b>79</b>
(55-68) <b>D</b>	<b>61</b>	
(39-54) <b>E</b>		
(21-38) <b>F</b>		
(1-20) <b>G</b>		
<i>Not energy efficient - higher running costs</i>		
<b>England, Scotland &amp; Wales</b>	EU Directive 2002/91/EC	

Recently refurbished one double bedroom second floor apartment (approx 600 sq ft.) in this Victorian conversion situated in this excellent location in South Hampstead. Comprising reception room with open plan fitted kitchen with dishwasher, principal bedroom with wardrobes and much smaller second room/home office, tiled bathroom, part furnished. Available from 20th August. **NOT AVAILABLE TO SHARERS!**

ML Estates wish to advise prospective purchasers that we have not checked the services or appliances. These particulars have been prepared as a guide only, any floor-plan or map is for illustrative purposes only. ML Estates, for themselves and for the vendors or lessors of this property whose agents they are given notice that: the particulars have been produced in good faith; do not constitute any part of a contract; no person in the employment of ML Estates has any authority to make or give any representation of warranty in relation to this property.