

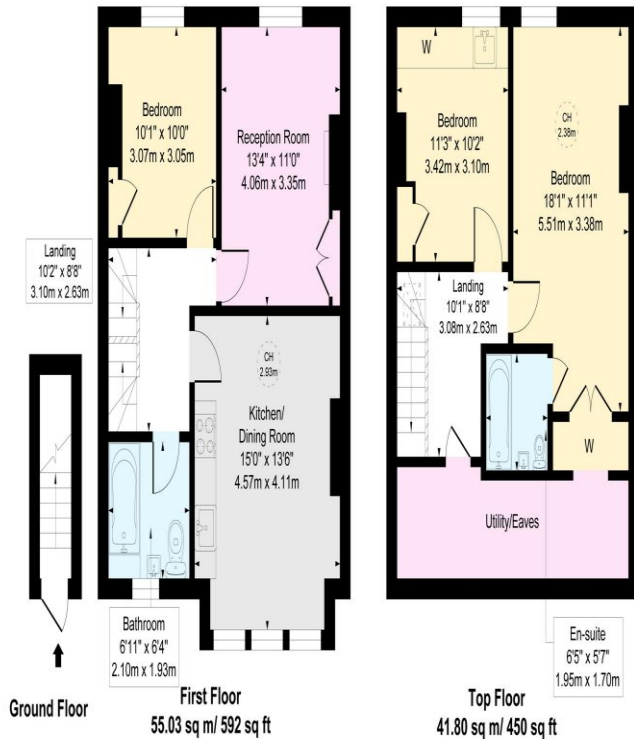
3 Bed Maisonette
Howard Road
London NW2

- Fantastic Family Home
- High Ceilings
- 12 Mins to Kings X
- Close to Bars and Restaurants

Offers in excess of £550,000
Long Lease

Howard Road NW2

Approximate gross Internal Area
96.84 sq m / 1042 sq ft



This floor plan is for illustrative purposes only and must not be relied upon as a statement of fact.



Energy Efficiency Rating		
	Current	Potential
<i>Very energy efficient - lower running costs</i>		
(92-100) A		
(81-91) B		82
(69-80) C		
(55-68) D	61	
(39-54) E		
(21-38) F		
(1-20) G		
<i>Not energy efficient - higher running costs</i>		
England, Scotland & Wales	EU Directive 2002/91/EC	

A completely refurbished three double bedroom duplex apartment arranged over the TOP TWO FLOORS of this large Victorian terraced house located on this quiet residential turning just moments from Cricklewood Thameslink and Willesden Green Underground stations. With many original features this stunning home must be seen!

ML Estates wish to advise prospective purchasers that we have not checked the services or appliances. These particulars have been prepared as a guide only, any floor-plan or map is for illustrative purposes only. ML Estates, for themselves and for the vendors or lessors of this property whose agents they are given notice that: the particulars have been produced in good faith; do not constitute any part of a contract; no person in the employment of ML Estates has any authority to make or give any representation of warranty in relation to this property.