



- Attractive & Easy To Maintain Garden
- Naturally Bright Accommodation

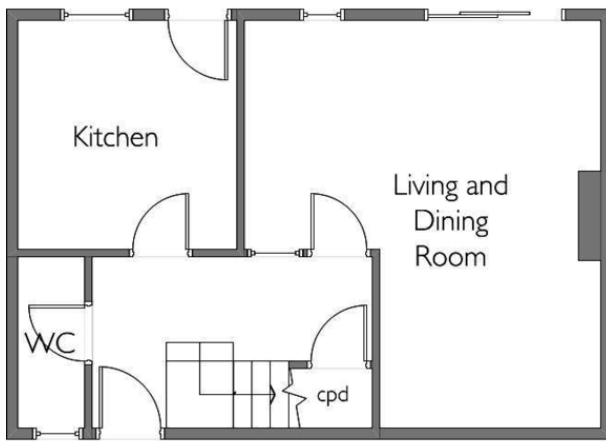
- Accessible Transport Links
- Peaceful Setting

- Access To Forest
- Readily Available

A smartly-presented 3-bedroom house located in a peaceful cul-de-sac with the third smaller bedroom ideally suited to office or dressing space. The property includes an attractive garden and is located within the forest with transport links and local amenities a short drive or bus ride away.

**Stevenette**

**60 Newlands Road  
Woodford Green, IG8 0RU  
£2,395 pcm**

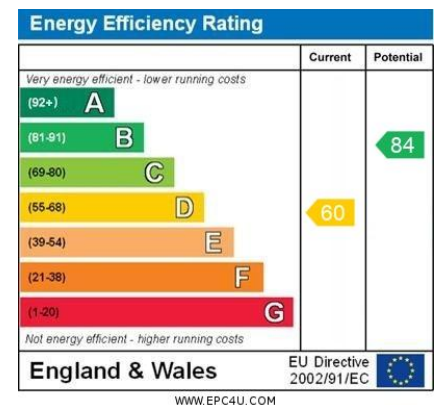


GROUND  
FLOOR



FIRST  
FLOOR

Stevenette



5a Simon Campion Court, 232-234 High  
Street, Epping, Essex, CM16 4AU  
Tel: 01992 563090  
Email: [lettings@stevenette.com](mailto:lettings@stevenette.com)



@StevenetteandCoLLP



@StevenetteandCo



Whilst every care has been taken in the preparation of these sales particulars, they are for guidance purposes only and no guarantee can be given as to the working condition of the various services and appliances. Measurements have been taken as accurately as possible but slight discrepancies may inadvertently occur. The agents have not tested appliances or central heating services. Interested applicants are advised to make their own enquiries and investigation before finalising their offer purchase.