



- Three Bedrooms
- Short Drive to Epping Town
- Good Size Garden and Driveway
- Good Transport Links
- Rural Setting
- Recently Renovated

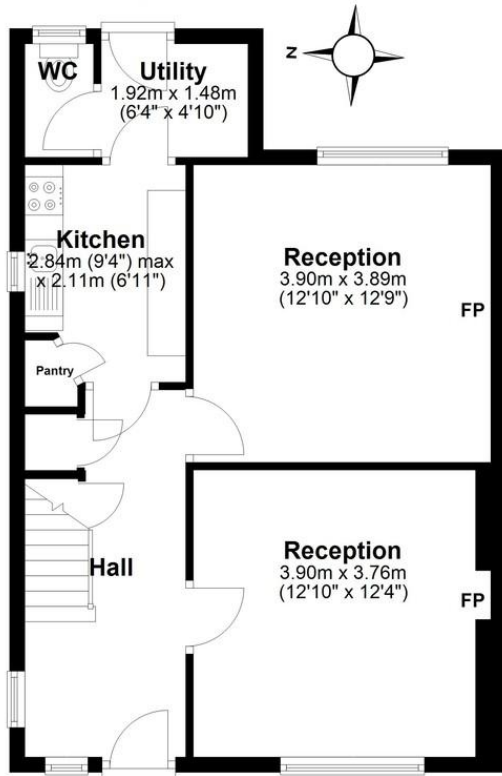
Situated on Bury Road, a short distance from Epping High Street, this characterful semi detached cottage offers three good size bedroom accommodation with downstairs bathroom and good size garden. Generous parking space available on the driveway. Good access to motorways and Epping town with its amenities and train.

Stevenette

**Bury Lane
Epping, CM16 5JA
£1,800 pcm**

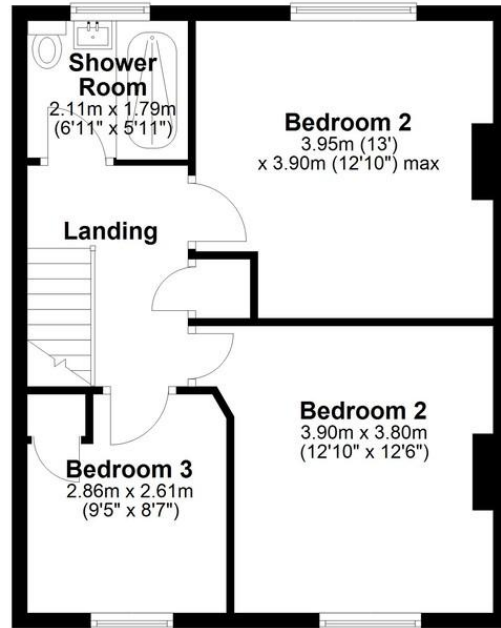
Ground Floor

Approx. 52.0 sq. metres (559.3 sq. feet)



First Floor

Approx. 47.4 sq. metres (510.4 sq. feet)



Total area: approx. 99.4 sq. metres (1069.6 sq. feet)

EPC - TBC

Stevenette

5a Simon Campion Court, 232-234 High
Street, Epping, Essex, CM16 4AU
Tel: 01992 563090
Email: lettings@stevenette.com



@StevenetteandCoLLP



@StevenetteandCo



Whilst every care has been taken in the preparation of these sales particulars, they are for guidance purposes only and no guarantee can be given as to the working condition of the various services and appliances. Measurements have been taken as accurately as possible but slight discrepancies may inadvertently occur. The agents have not tested appliances or central heating services. Interested applicants are advised to make their own enquiries and investigation before finalising their offer purchase.