



Wimborne
Dorset, BH21 1DY

Wimborne, Dorset, BH21 1DY

FREEHOLD PRICE GUIDE: £350,000 - £375,000

An exciting and unique opportunity to purchase, we believe, the oldest house in Wimborne.

5 King Street is a three bedroom Grade II Listed town house dating approximately from the late 16th century and although in need of modernisation is situated in the heart of the town centre, opposite the famous Minster church and within a few yards of the Square and many of the town amenities.

- Approximately 1,537 sq ft
- Entrance hallway with stone flag flooring
- Spacious sitting room with stunning fireplace and front aspect window overlooking the Minster
- Kitchen/breakfast room with base units, space for appliances, gas boiler, triple aspect windows, space for table and chairs
- Separate utility room with sink, worktop and space and plumbing for washing machine
- Spacious landing area
- Three bedrooms
- Main bedroom 19' 2" x 15' with views over the Minster, en suite shower room
- Bathroom with white three piece suite
- Outside: Garden of irregular shape (approximately 50' x 21' max) with patio and steps leading to good size lawn area with tree and shrub borders, enclosed by brick walling and fencing
- Residents parking permits available from the town Council

Wimborne is well served by an excellent range of services for residents including doctors, a local hospital, a pyramid of sought after schools and strong health and social care. Leisure facilities are well catered for and the town is within easy access to the county's areas of outstanding natural beauty offering miles of bridle ways, footpaths and coastal routes to explore.

COUNCIL TAX BAND: E

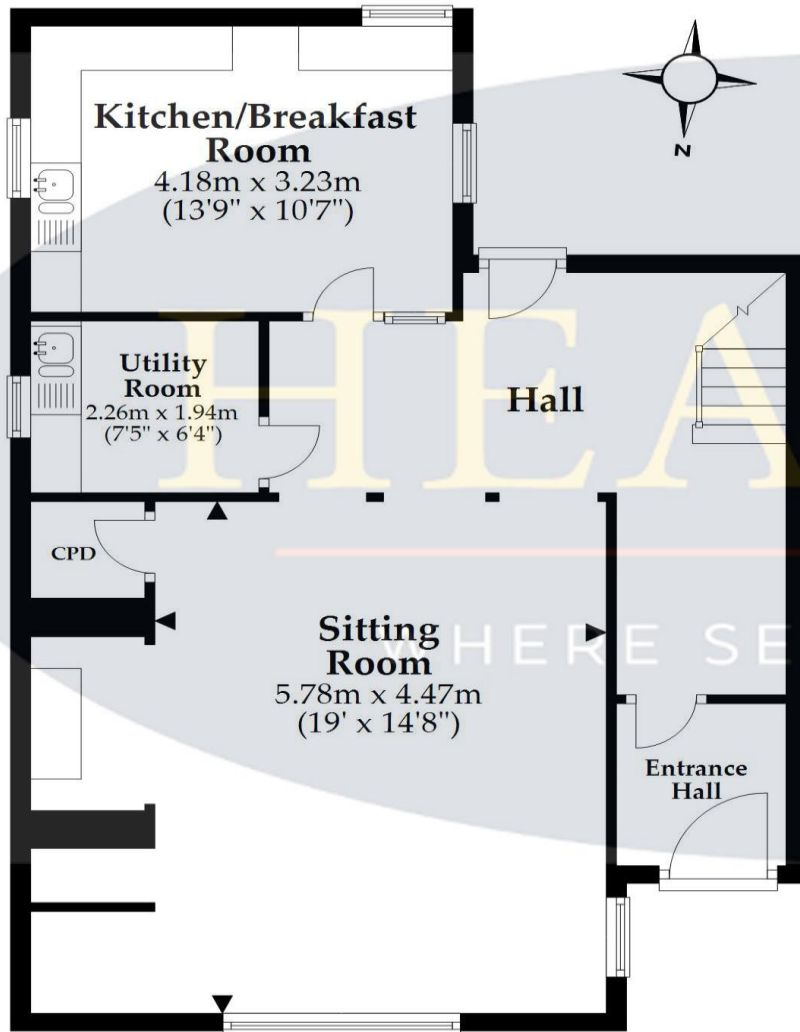
AGENTS NOTE: The heating system, mains and appliances have not been tested by Hearn's Estate Agents. Any areas, measurements or distances are approximate. The text, photographs and plans are for guidance only and are not necessarily comprehensive.





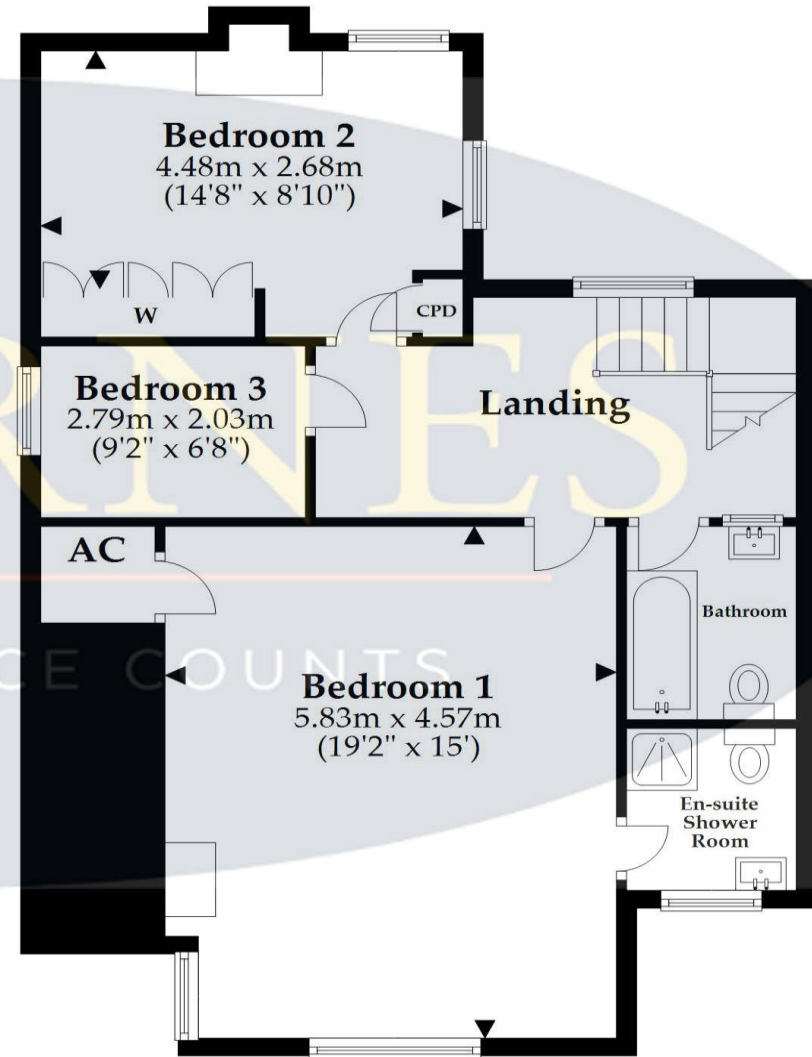
Ground Floor

Approx. 71.2 sq. metres (766.9 sq. feet)



First Floor

Approx. 71.6 sq. metres (770.3 sq. feet)



Total area: approx. 142.8 sq. metres (1537.1 sq. feet)

This plan is not to scale and it is for general guidance only. LJT Surveying Ltd Ringwood





View from front door



View from bedroom



www.hearnes.com

6 Cook Row, Wimborne, Dorset BH21 1LB

Tel: 01202 842922 Email: Wimborne@hearnes.com

OFFICES ALSO AT: BOURNEMOUTH, FERNDOWN, POOLE & RINGWOOD