



BOWEN

PROPERTY SINCE 1862

Asking Price £250,000

🏠 2 Bedrooms 🚿 2 Bathrooms

Plot 14, The Mulberries, Dudleston Heath,
Ellesmere, Shropshire, SY12

Plot 14, The Mulberries, Dudleston Heath, Ellesmere, SY12

General Remarks

The Mulberries at Dudleston Heath is an exclusive collection of 29 elegant country homes nestled in the heart of north-west Shropshire. Designed for modern living, each home features spacious gardens and thoughtfully crafted interiors, offering a perfect balance of contemporary comfort and rural charm.

The Windsor (Plot 14): A beautifully designed two-bedroom semi-detached home, ideally located next to open green space, with a private west-facing garden and driveway parking for two cars.

Perfect for first-time buyers, downsizers, or anyone seeking a low-maintenance home with a high-quality finish, The Windsor combines style with practicality. The spacious open-plan kitchen and dining area features French doors leading directly to the garden, creating seamless indoor-outdoor living. A generous lounge offers a welcoming and relaxing space, while a downstairs cloakroom/WC adds everyday convenience.

Upstairs, the principal bedroom boasts a luxurious en suite, and the second bedroom—also a comfortable double—is served by a stylish family bathroom.



Set within the peaceful rural surroundings of Dudleston Heath, Plot 14 enjoys a premium position adjacent to public open space, ideal for nature lovers and families alike.

Built by Dennis Edwards Homes, an award-winning local developer known for crafting high-specification homes with care and character. Their reputation is built on quality, attention to detail, and a deep understanding of what modern buyers are looking for—delivering homes that are as practical as they are beautiful.

For specific plot details please see the site layout plan. Sq.ft. 850 (79.sq.m)

Location: Set in a picturesque rural location, Dudleston Heath offers the best of both worlds—with a warm, welcoming community and a range of convenient local amenities. The village features a vibrant village hall that hosts regular events, a handy post office, and the friendly Parish Hall pub. Residents also enjoy a variety of recreational facilities, including snooker, tennis, crown green bowls, and a well maintained football pitch. Families are well catered for with a choice of local schools. Nearby schools include Criftins CE Primary School, St Martins School, The Marches School in Oswestry, and Lakelands Academy in Ellesmere. For those seeking independent education, excellent options include Ellesmere College, Moreton Hall, Oswestry School, and Packwood Haugh—all within easy reach.

Accommodation

Hall: 5' 2" x 4' 6" (1.57m x 1.37m) With stairs to the first floor and door to:

Lounge: 14' 8" x 15' 1" (4.47m x 4.59m)

Lobby:

Cloakroom: 3' 0" x 5' 6" (0.91m x 1.68m) With wash hand basin and low flush WC.

Kitchen/Dining Room: 18' 0" x 8' 5" (5.48m x 2.56m)

A well designed open plan kitchen/diner with a contemporary range of cabinets, integrated fridge freezer, space and plumbing for a dishwasher and washing machine, ample space for a dining table and French doors leading to the garden.

First Floor Landing: With built-in cupboard and separate cupboard housing heat pump, doors to:

Bedroom 1: 18' 0" x 9' 8" (5.48m x 2.94m)

En Suite: 3' 6" x 8' 9" (1.07m x 2.66m) With suite comprising shower cubicle, wash hand basin and WC.

Bedroom 2: 11' 2" x 9' 8" (3.40m x 2.94m)

Bathroom: 6' 6" x 6' 2" (1.98m x 1.88m) Comprising panel bath, wash hand basin and WC.

Outside: Private west-facing rear garden. Driveway parking for two cars. Energy efficient design with air source heat pump. 10 year LABC Warranty and two year Developer Warranty.

Tenure: We are informed that the property is freehold subject to vacant possession on completion.

EPC Rating: To be assessed.

Council Tax Band: To be confirmed by Local Authority once build is complete.

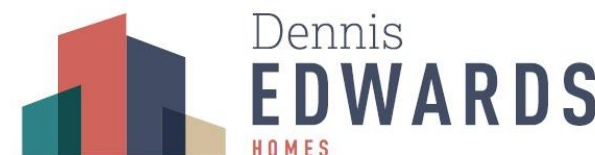
Local Authority: Shropshire Council, The Shirehall, Abbey Foregate, Shrewsbury, Shropshire, SY2 6ND. Tel: 0345 6789000

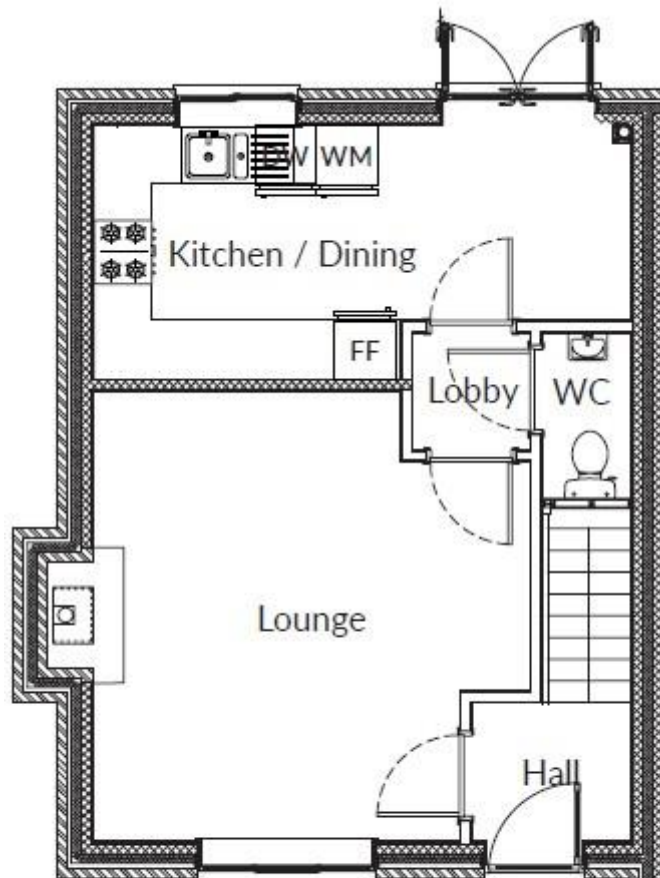
Directions: From Ellesmere proceed out of the town along the B5068 signposted Dudleston Heath, continue for approximately 2 miles. On entering the village of Dudleston Heath, The Mulberries development will be located on the left hand side.



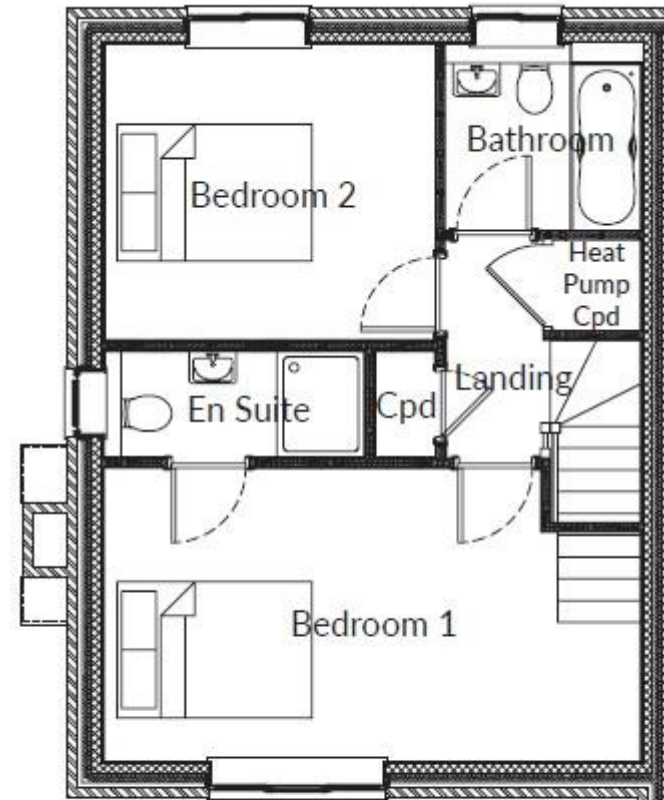
THE MULBERRIES

• DUDLESTON HEATH •





Ground Floor



First Floor