



 **3**  
Bedrooms

 **1**  
Bathroom

**Tenure :**  
**Freehold**





To be sold with no onward chain is this three bedroom semi detached home located on Dale Villas in Castleford. Offering spacious rooms throughout, the property internally comprises in brief: - ground floor: - lounge, kitchen diner and a conservatory. First floor: - landing, three bedrooms and a bathroom. The property has the benefit of double glazed windows and gas central heating. Externally, you have a large driveway to the front that provides off road parking. To the rear you have a low maintenance garden and garage. Call Tudor Sales & Lettings on 0113 282 3056 for more information or to arrange a viewing!

**Living Room** 4.80m x 4.41m (15' 9" x 14' 6")

Generously proportioned living room with a double glazed bay window and centrally heated radiator

**Kitchen/Diner** 4.64m x 3.03m (15' 3" x 9' 11")

Modern fitted kitchen with tiled splashback and a range of wall and base units. Integrated appliances include sink with mixer tap, range style double oven with hob and extractor fan over. Laminate wooden flooring, centrally heated radiator and double glazed window. Suprisingly useful under stairs storage cupboard.

**Conservatory** 3.04m x 2.69m (10' x 8' 10")

Conservatory with centrally heated radiator. Double glazed to three sides with door to low maintenance garden.

**Bedroom 1** 3.80m x 2.74m (12' 6" x 9' )

Double bedroom with fitted cupboards and storage units. Centrally heated radiator and double glazed window

**Bedroom 2** 3.42m x 2.74m (11' 3" x 9' )

Double bedroom with centrally heated radiator and double glazed window

**Bedroom 3** 2.50m x 1.83m (8' 2" x 6' )

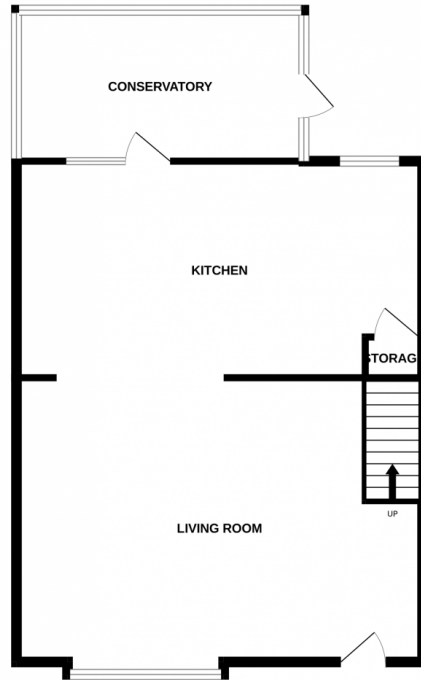
Single bedroom with double glazed window and centrally heated radiator

**Bathroom** 1.93m x 1.81m (6' 4" x 5' 11")

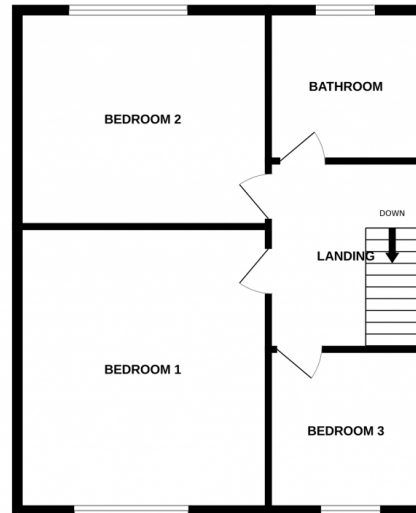
House bathroom with white three piece suite comprising of bath with shower over, sink with storage units under and WC. Centrally heated towel rail and double glazed window with privacy glass.



GROUND FLOOR



1ST FLOOR



Whilst every attempt has been made to ensure the accuracy of the floorplan contained here, measurements of doors, windows, rooms and any other items are approximate and no responsibility is taken for any error, omission or mis-statement. This plan is for illustrative purposes only and should be used as such by any prospective purchaser. The services, systems and appliances shown have not been tested and no guarantee as to their operability or efficiency can be given.  
Made with Metropix ©2025

