



 **4**
Bedrooms

 **4**
Bathrooms

**Tenure :
Freehold**



Is this property the perfect family home?

Tudor Sales and Lettings are pleased to present for sale this 4 bedroom detached property in Wakefield.

Boxes ticked: Well presented, cul-de-sac location, off street parking, garage, good sized rear garden, four double bedrooms, three reception rooms, modern kitchen, four bathrooms.

Do you need anything else ?

The property has easy access to major transport links and a range of shops and local amenities.

Book your viewing today to avoid disappointment, this property MUST be seen to be fully appreciated!

Kitchen/Diner 4.80m x 3.83m (15' 9" x 12' 7")

Generously proportioned modern kitchen/diner with a range of wall and base units and integrated appliances including, fridge freezer, double oven, dishwasher and sink with mixer tap, hob with extractor fan over. tiled splashback. Double glazed French style patio doors to rear garden.

Living Room 4.67m x 4.14m (15' 4" x 13' 7")

Living room with double glazed windows, double glazed French style patio doors to garden, centrally heated radiator.

Dining Room/Bedroom 5 3.17m x 2.93m (10' 5" x 9' 7")

Second reception room, could be used for multiple purposes, office, bedroom, playroom, dining room etc.

Study 2.94m x 2.89m (9' 8" x 9' 6")

Third reception room currently used as a Playroom/study with double glazed window and centrally heated radiator.

Bedroom 1 3.93m x 3.47m (12' 11" x 11' 5")

Double bedroom with double glazed window and centrally heated radiator and fitted wardrobes.

En-Suite 2.09m x 1.88m (6' 10" x 6' 2")

en-suite shower room with white three piece bathroom suite comprising of shower tray, hand basin and shower tray. Double glazed window and centrally heated radiator.

Bedroom 2 3.30m x 3.62m (10' 10" x 11' 11")

Double bedroom with double glazed window and centrally heated radiator.

Jack and Jill en-suite 1.74m x 2.68m (5' 9" x 8' 10")

Providing en-suite facilities for two bedrooms is this en-suite with white three piece bathroom suite comprising of shower tray, WC and hand basin. partially tiled with extractor fan, double glazed window and centrally heated radiator.

Bedroom 3 3.30m x 3.00m (10' 10" x 9' 10")

Double bedroom with double glazed window and centrally heated radiator.

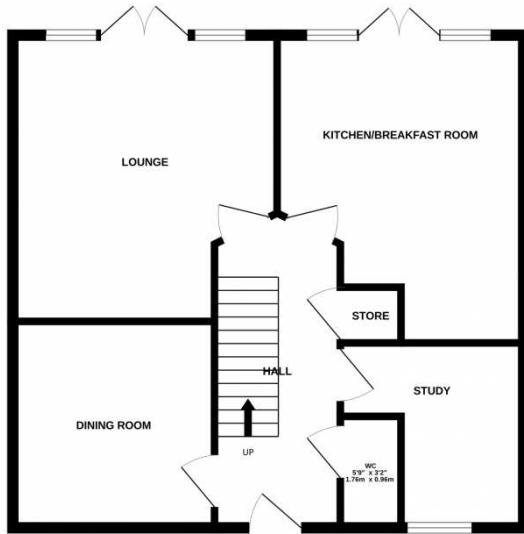
Bedroom 4 *2.95m x 2.68m (9' 8" x 8' 10")*

Double bedroom with double glazed window and centrally heated radiator.

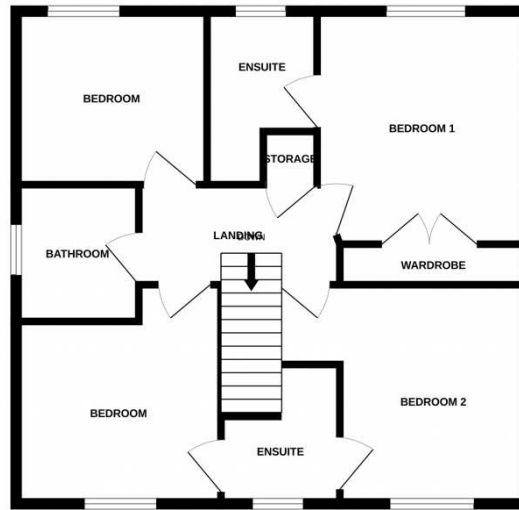
Bathroom *2.09m x 1.88m (6' 10" x 6' 2")*

Modern bathroom with white three piece suite comprising of bath, hand basin and WC. tiled to bath and basin area the bathroom also has a double glazed window with privacy glass and heated towel rail.

GROUND FLOOR



1ST FLOOR



Whilst every attempt has been made to ensure the accuracy of the floorplan contained here, measurements of doors, windows, rooms and any other items are approximate and no responsibility is taken for any error, omission or mis-statement. This plan is for illustrative purposes only and should be used as such by any prospective purchaser. The services, systems and appliances shown have not been tested and no guarantee as to their operability or efficiency can be given.
Made with Metropix ©2025

