



 **2**
Bedrooms

 **1**
Bathroom

Tenure :
Freehold



TUDOR SALES & LETTINGS ARE DELIGHTED TO BRING TO THE MARKET THIS DECEPTIVELY SPACIOUS TWO BEDROOM TERRACED PROPERTY BASED IN CENTRAL MORLEY. SET OVER THREE FLOORS WITH PLENTY OF ORIGINAL FEATURES AND ALSO BASED CLOSE TO MORLEY TRAIN STATION. THIS WOULD MAKE THE PERFECT FIRST HOME.

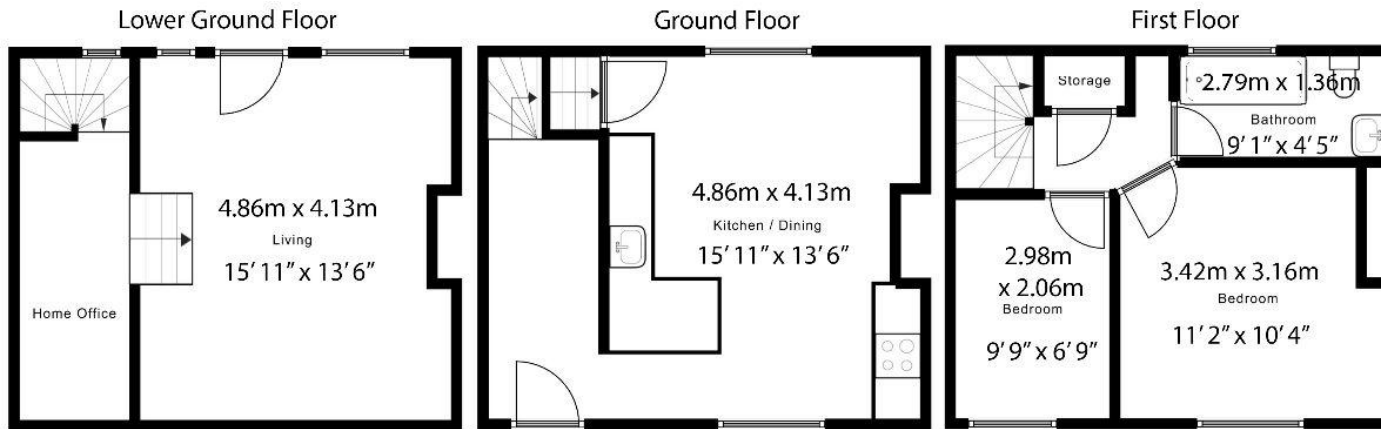
IF COMMUTING IS IMPORTANT TO YOU THEN LOOK NO FURTHER. WITHIN A COUPLE OF MINUTES WALK IS MORLEY TRAIN STATION TO TAKE YOU TO LEEDS CITY CENTRE IN APPROXIMATELY 10 MINUTES! FOR MOTORWAY LINKS YOU CAN FIND THE M62 AND M1 ALSO WITHIN CLOSE DISTANCE. NEARBY YOU WILL ALSO FIND AN ABUNDANCE OF AMENITIES SUCH AS THE NEW BARS AT MORLEY BOTTOMS AND MORLEY TOWN CENTRE FOR SUPERMARKETS AND CAFES.

THE KITCHEN OF THIS PROPERTY BOASTS PLENTY OF WORKTOP / CUPBOARD SPACE ALONG WITH SUFFICIENT SPACE FOR DINING AREA! THE LOWER GROUND FLOOR YOU FIND A BEAUTIFUL LOUNGE WITH PLENTY OF ORIGINAL FEATURES THAT GIVES THIS PROPERTY A HOMELY FEEL! ALSO IS A SEPARATE SPACE WHICH COULD BE USED AS A STUDY.

UPSTAIRS ARE TWO DOUBLE BEDROOMS THAT ARE READY TO MOVE IN TO, SOMETHING THAT WILL GREATLY APPEAL TO THE FIRST TIME BUYER LOOKING TO STEP ON TO THE PROPERTY LADDER. THE FAMILY BATHROOM COMPRISES OF LOW LEVEL FLUSH WC, HAND BASIN AND OVER BATH SHOWER.

EXTERNALLY TO THE FRONT IS ON STREET PARKING AND TO THE REAR IS A LOW MAINTENANCE GARDEN.

CALL TUDOR SALES & LETTINGS TODAY ON 0113 282 3056 FOR MORE INFORMATION OR TO ARRANGE A VIEWING.



All measurements are approximate and are for display purposes only.
No Liability is accepted by the Agency as to the exact measurements of the rooms. Dan Pearce Sells Homes retains the copyright on this plan and allows agents to use it with agreed permission.

