



 **3**
Bedrooms

 **1**
Bathroom

Tenure :
Freehold

Offers in excess of £130,000
Fryston Road, Castleford



To be sold with no onward chain is this three bedroom terrace property on Fryston Road in Castleford.

Call Tudor Sales & Lettings on 0113 282 3056 for more information or to arrange a viewing.

To be sold with no onward chain is this spacious, three bedroom terrace property located on Fryston Road in Castleford. The internal layout comprises in brief: - entrance hallway, kitchen, lounge and a bathroom. First floor: - landing, three bedrooms and a bathroom. Benefits from double glazing and gas central heating. Externally, there is a large lawned garden to the rear. Fryston Road is within easy reach of many local amenities. Call Tudor Sales & Lettings on 0113 282 3056 for more information or to arrange a viewing.

Kitchen

With a range of wall and base units. Laminated worktops. Sink and tap. Integrated oven, hob and extractor over. Tiled splashback. Tiled flooring. Central heating radiator. Plumbing for washing machine. Double glazed window.

Lounge

Feature fireplace. Double glazed window. Central heating radiator. Laminated flooring.

Bedroom 1

Central heating radiator and double glazed window.

Bedroom 2

Central heating radiator. Dado rail. Central heating radiator and a double glazed window.

Bedroom 3

Central heating radiator and a double glazed window.

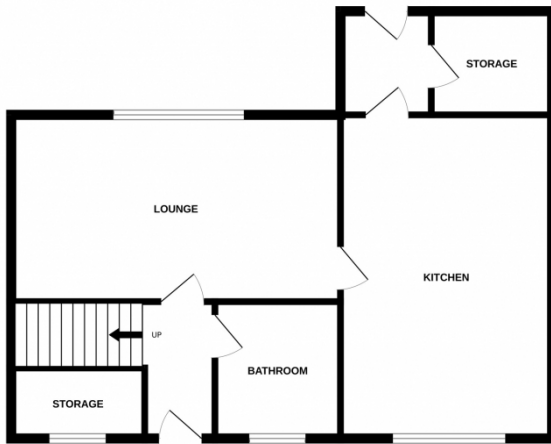
Bathroom

Three piece white suite with: - bath with shower over, wc and a wash hand basin. Tiled walls. Double glazed window.

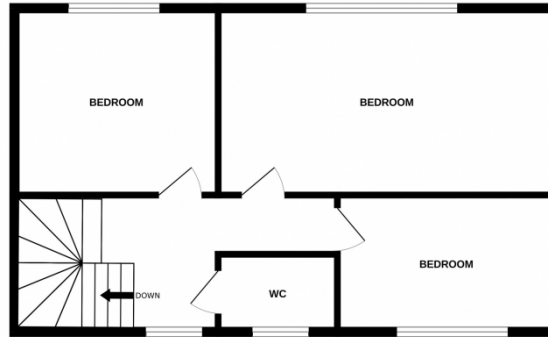
WC

Part tiled walls. WC. Central heating radiator. Double glazed window.

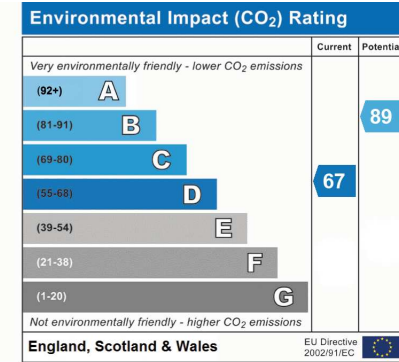
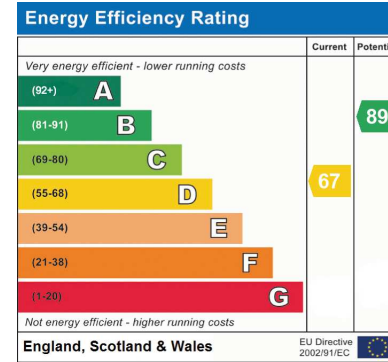
GROUND FLOOR



1ST FLOOR



Whilst every attempt has been made to ensure the accuracy of the floorplan contained here, measurements of doors, windows, rooms and any other items are approximate and no responsibility is taken for any error, omission or mis-statement. This plan is for illustrative purposes only and should be used as such by any prospective purchaser. The services, systems and appliances shown have not been tested and no guarantee as to their operability or efficiency can be given.
Made with Metropix ©2024



Address: Fryston Road, Castleford

