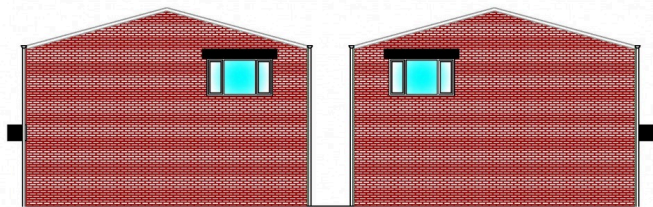




 0
Bedroom

 0
Bathroom

Tenure :
Freehold



Tudor Sales and Lettings are pleased to present for sale open scrub-land at Normandy Court, Castleford, WF10 5NR. The site is positioned within an established industrial park which is allocated within the Local Plan as Employment Zone – EZ9, Wakefield Europort, Whitwood. To the rear and side of the land there are existing commercial-industrial units which share a point of access, beyond which there is a railway line. To the north of site, there is a bus stop within a short walking distance that includes services between Castleford and Knottingley. The surrounding area is predominantly industrial in character and has been developed for a range of Class B1, B2 and B8 related uses.

Planning Permission granted.

Asking Price £90,000
Normandy Court, Whitwood

