

LEASEHOLD



Apartment

3A ECCLESTON SQUARE, LONDON, SW1V 1NP

Asking Price

£450,000

FEATURES



TUCKERMAN
ESTATE AGENTS
PROPERTY PROFESSIONALS

2 Bedroom Apartment located in London

Call us on

020 7222 5510

info@tuckermanresidential.co.uk

www.tuckermanresidential.co.uk

Nestled in the heart of SW1, Eccleston Square is home to a remarkable offering - a spacious 768 square feet basement flat, enriched by the intrigue of a short 28-year lease.

Council Tax Band

F

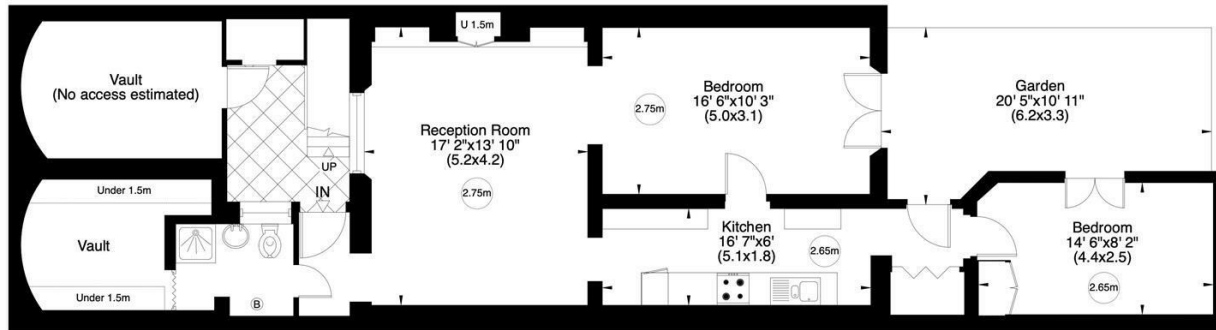
Eccleston Square, SW1

Gross internal area (approx.)

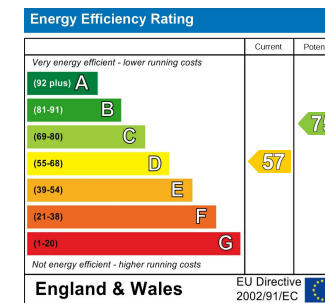
88 Sq m (951 Sq ft) Including Vault, Estimated vault and under 1.5m

71 Sq m (768 Sq ft) Excluding Vault, Estimated vault and under 1.5m

For identification only, Not to Scale



Lower Ground Floor



Agents Note: Whilst every care has been taken to prepare these particulars, they are for guidance purposes only. All measurements are approximate and are for general guidance purposes only and whilst every care has been taken to ensure their accuracy, they should not be relied upon and potential buyers are advised to recheck the measurements.

www.virtualtours.london

Not to scale, for guidance only and must not be relied upon as a statement of fact. All measurements and areas are approximate only (and have been prepared in accordance with the current edition of the RICS Code of Measuring Practice).

TUCKERMAN
ESTATE AGENTS
PROPERTY PROFESSIONALS