



Morpeth Terrace, SW1P | £4,500 Per Month



**TUCKERMAN**  
ESTATE AGENTS  
PROPERTY PROFESSIONALS



# Morpeth Terrace, London

Nestled in the charming area of Morpeth Terrace, London, this splendid apartment offers a perfect blend of comfort and elegance. With four spacious bedrooms, this residence is ideal for families or those who enjoy having extra space for guests or a home office. The apartment boasts a well-appointed reception room, providing a welcoming area for relaxation and entertaining.

The property features three modern bathrooms, ensuring convenience and privacy for all occupants. Each bathroom is designed with contemporary fixtures, adding a touch of luxury to your daily routine.

Morpeth Terrace is known for its picturesque surroundings and proximity to local amenities, making it a desirable location for both work and leisure. Residents can enjoy easy access to parks, shops, and excellent transport links, allowing for effortless exploration of the vibrant city of London.

This apartment is not just a place to live; it is a lifestyle choice that combines comfort, style, and convenience in one of London's most sought-after areas. This property presents an exceptional opportunity to experience urban living at its finest.









# Morpeth Terrace, London

Available

Per Month: £4,500 Per Month

Furnishing: Unfurnished

Available From: 6th February 2026

Local Authority:

Council Tax Band: F

Approximate Gross Internal Area:  
sq ft

Energy Efficiency Rating

	Current	Potential
Very energy efficient - lower running costs		
(92 plus) <b>A</b>		
(81-91) <b>B</b>		
(69-80) <b>C</b>		82
(55-68) <b>D</b>	69	
(39-54) <b>E</b>		
(21-38) <b>F</b>		
(1-20) <b>G</b>		
Not energy efficient - higher running costs		

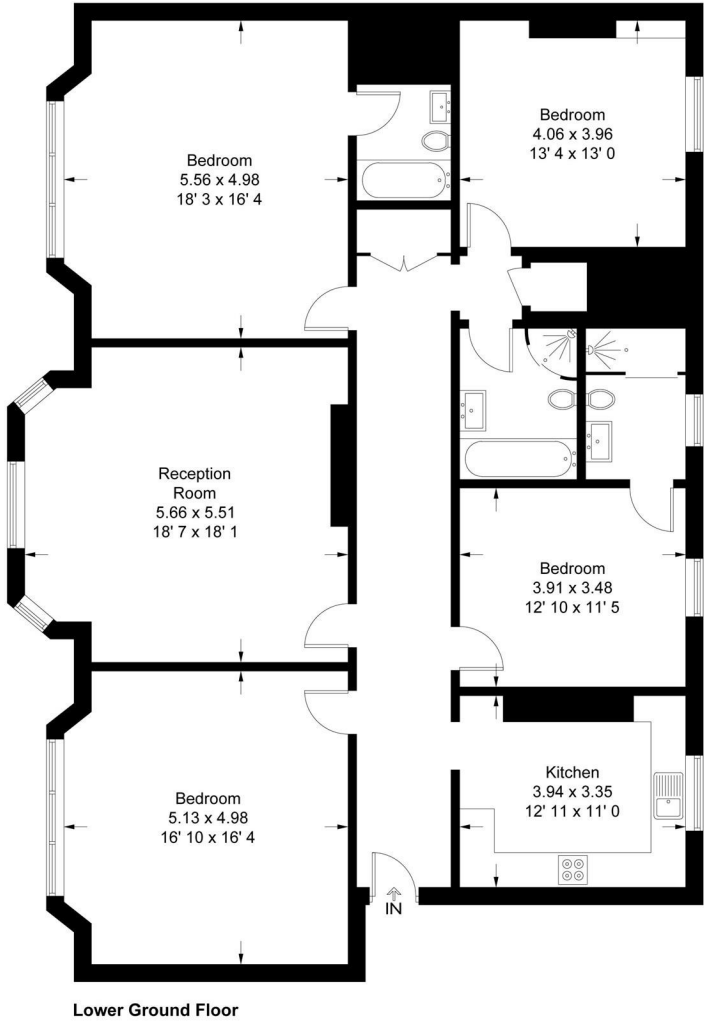
England & Wales

EU Directive

2002/91/EC

Morpeth Mansions

Approximate Gross Internal Area = 1849 sq ft / 171.8 sq m



This plan is not to scale and must be used as layout guidance only. All measurements and areas are approximate and should not be relied upon to provide accurate information. This plan must not be relied upon when making property valuations, design considerations or any other such relevant decisions. We accept no responsibility or liability (whether in contract, tort or otherwise) in relation to any loss whatsoever arising from or in connection with any use of this plan or the adequacy, accuracy or completeness of it or any information within it.

020 7222 5510

info@tuckermanresidential.co.uk

52 Moreton Street, London, SW1V 2PB

www.tuckermanresidential.co.uk

Agents Note: Whilst every care has been taken to prepare these sales particulars, they are for guidance purposes only. All measurements are approximate are for general guidance purposes only and whilst every care has been taken to ensure their accuracy, they should not be relied upon and potential buyers are advised to recheck the measurements

TUCKERMAN

ESTATE AGENTS

PROPERTY PROFESSIONALS