



Morpeth Terrace, SW1P | £2,250 Per Month

 1

 1

 1

 c

TUCKERMAN

ESTATE AGENTS

PROPERTY PROFESSIONALS

Morpeth Terrace, SW1P

A well presented one double bedroom apartment located on the fourth floor of this prestigious mansion block.

The property extends to over 600 sq ft and comprises hallway leading to; large reception room overlooking Westminster Cathedral, double bedroom, fitted kitchen, and bathroom. The block benefits from a resident porter and communal heating and hot water.

The property benefits from excellent transport connections and an extensive selection of amenities, all within a short walk.





Morpeth Terrace, SW1P

Available

Per Month: £2,250 Per Month


Furnishing: Furnished

Available From: 27th February 2026

Local Authority: Westminster City Council

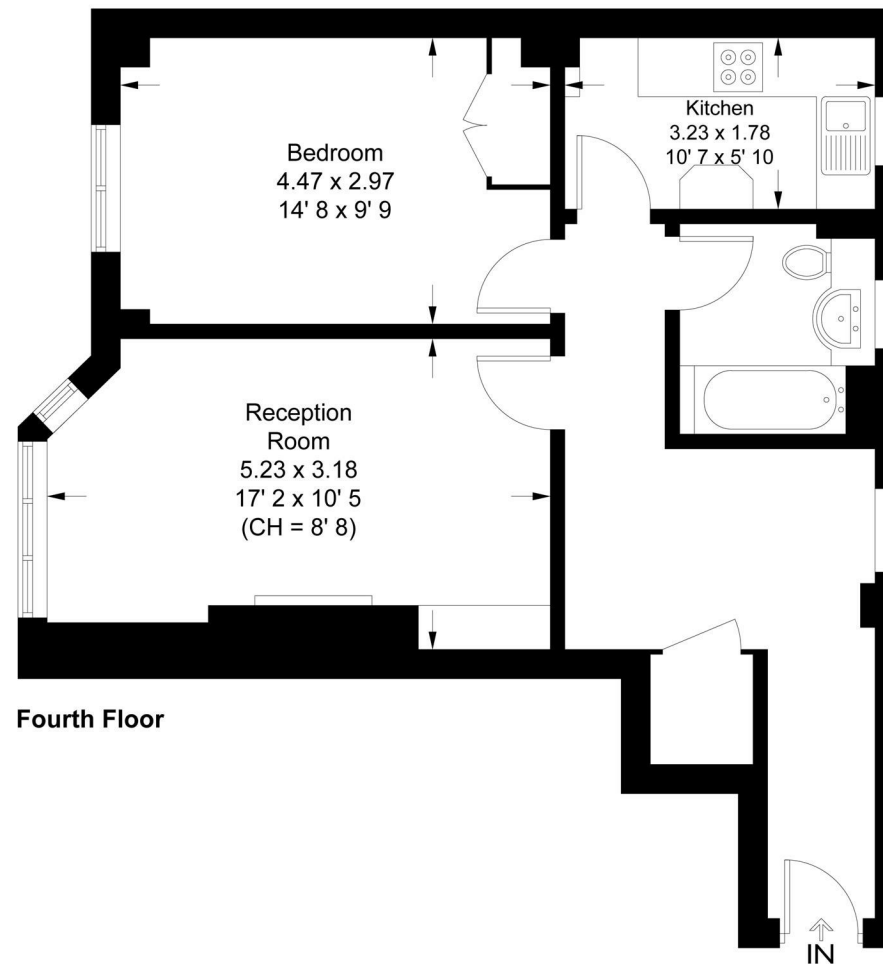
Council Tax Band: D

Approximate Gross Internal Area:
608.00 sq ft

Energy Efficiency Rating		
	Current	Potential
Very energy efficient - lower running costs		
(92 plus) A		
(81-91) B		
(69-80) C		
(55-68) D		
(39-54) E		
(21-38) F		
(1-20) G		
Not energy efficient - higher running costs		
	71	81
England & Wales	EU Directive 2002/91/EC	

Ashley Court

Approximate Gross Internal Area = 608 sq ft / 56.5 sq m



This plan is not to scale and must be used as layout guidance only. All measurements and areas are approximate and should not be relied upon to provide accurate information. This plan must not be relied upon when making property valuations, design considerations or any other such relevant decisions. We accept no responsibility or liability (whether in contract, tort or otherwise) in relation to any loss whatsoever arising from or in connection with any use of this plan or the adequacy, accuracy or completeness of it or any information within it.

Agents Note: Whilst every care has been taken to prepare these sales particulars, they are for guidance purposes only. All measurements are approximate are for general guidance purposes only and whilst every care has been taken to ensure their accuracy, they should not be relied upon and potential buyers are advised to recheck the measurements

TUCKERMAN
E S T A T E A G E N T S
PROPERTY PROFESSIONALS

020 7222 5510

info@tuckermanresidential.co.uk
52 Moreton Street, London, SW1V 2PB
www.tuckermanresidential.co.uk