



Palace Street, SW1E | £4,000 Per Month



TUCKERMAN
ESTATE AGENTS
PROPERTY PROFESSIONALS

The View, Palace Street, London

Located in The View on Palace Street, this well proportioned two bedroom, two bathroom apartment occupies the second floor and offers approximately 1,346 sq ft (125.1 sq m) of bright, well arranged accommodation, with the benefit of a private balcony.

The layout is centred around an impressive reception room measuring approximately 31 ft x 19 ft, providing excellent space for both living and dining, and opening directly onto the balcony, ideal for entertaining or simply enjoying a quiet moment outdoors. A separate kitchen sits off the hallway and is neatly configured with good storage and preparation space.

The apartment offers two double bedrooms, including a generously sized principal bedroom, together with two bathrooms and useful built in storage, making it a practical option for owner occupiers, a London pied a terre, or a high quality investment within one of Westminster's most established modern developments.





The View, Palace Street, London

Let Agreed

Per Month: £4,000 Per Month

Furnishing: Unfurnished

Available From: 12th December 2025

Local Authority: City of Westminster

Council Tax Band: G

Approximate Gross Internal Area:
1346.00 sq ft

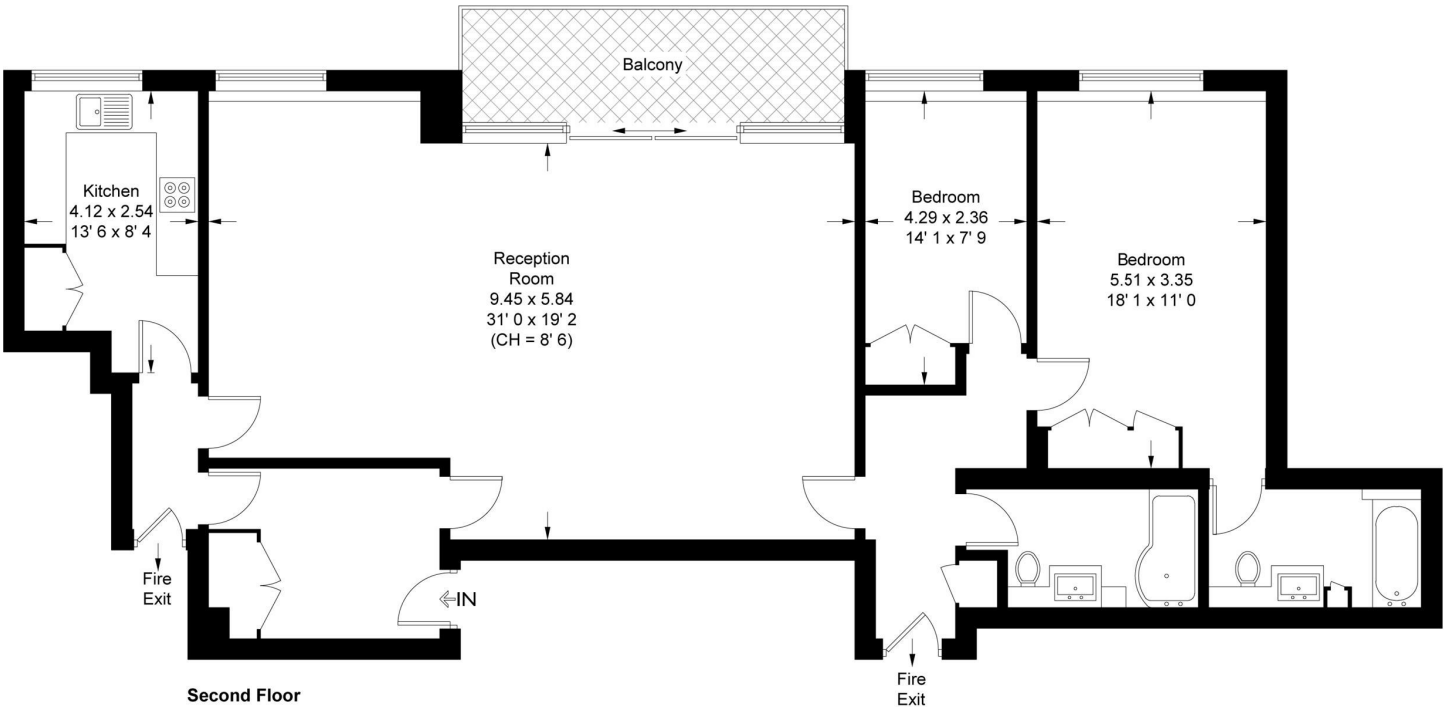
Energy Efficiency Rating

	Current	Potential
Very energy efficient - lower running costs		
(92 plus) A		
(81-91) B		
(69-80) C	75	76
(55-68) D		
(39-54) E		
(21-38) F		
(1-20) G		
Not energy efficient - higher running costs		

England & WalesEU Directive 2002/91/EC

Palace Street

Approximate Gross Internal Area = 1346 sq ft / 125.1 sq m



This plan is not to scale and must be used as layout guidance only. All measurements and areas are approximate and should not be relied upon to provide accurate information. This plan must not be relied upon when making property valuations, design considerations or any other such relevant decisions. We accept no responsibility or liability (whether in contract, tort or otherwise) in relation to any loss whatsoever arising from or in connection with any use of this plan or the adequacy, accuracy or completeness of it or any information within it.

020 7222 5510
info@tuckermanresidential.co.uk
52 Moreton Street, London, SW1V 2PB
www.tuckermanresidential.co.uk

Agents Note: Whilst every care has been taken to prepare these sales particulars, they are for guidance purposes only. All measurements are approximate are for general guidance purposes only and whilst every care has been taken to ensure their accuracy, they should not be relied upon and potential buyers are advised to recheck the measurements

TUCKERMAN

ESTATE AGENTS

PROPERTYPROFESSIONALS