



Kimber Road, SW18 | £1,450 Per Month



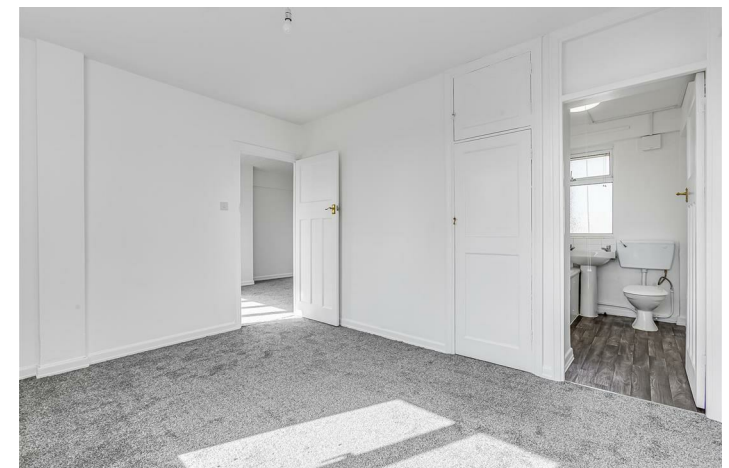
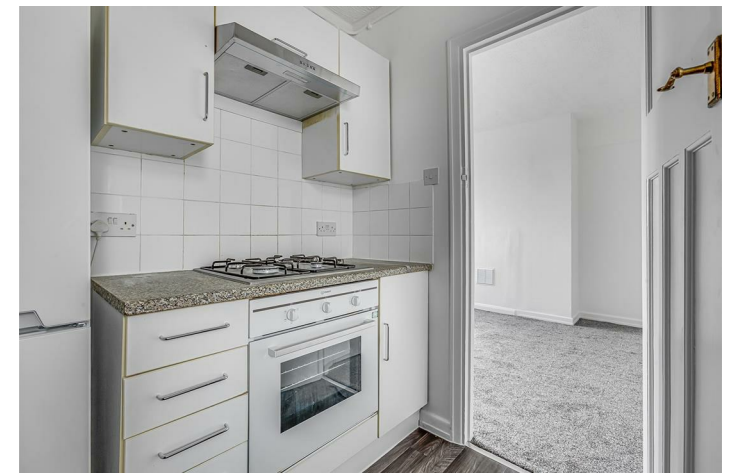
TUCKERMAN
E S T A T E A G E N T S
PROPERTY PROFESSIONALS

Kimber Road, London

This newly redecorated property boasts a spacious bedroom with an en-suite bathroom. Situated in a secure private building, this apartment offers peace of mind and a sense of safety. The lovely communal gardens provide a tranquil escape from the hustle and bustle of city life, ideal for relaxing or enjoying a leisurely stroll.

With 1 reception room, 1 bedroom, and 1 bathroom, this apartment is well-suited for individuals or couples looking for a cosy yet stylish living space. The property's prime location opposite King George's Park offers easy access to green spaces and recreational activities.





Kimber Road, London

Let Agreed

Per Month: £1,450 Per Month

Furnishing: Unfurnished

Available From: 17th October 2025

Local Authority: London Borough of Wandsworth

Council Tax Band: B

Approximate Gross Internal Area:
386.00 sq ft


Energy Efficiency Rating

	Current	Potential
Very energy efficient - lower running costs		
(92 plus) A		
(81-91) B		
(69-80) C		78
(55-68) D	66	
(39-54) E		
(21-38) F		
(1-20) G		
Not energy efficient - higher running costs		

England & Wales

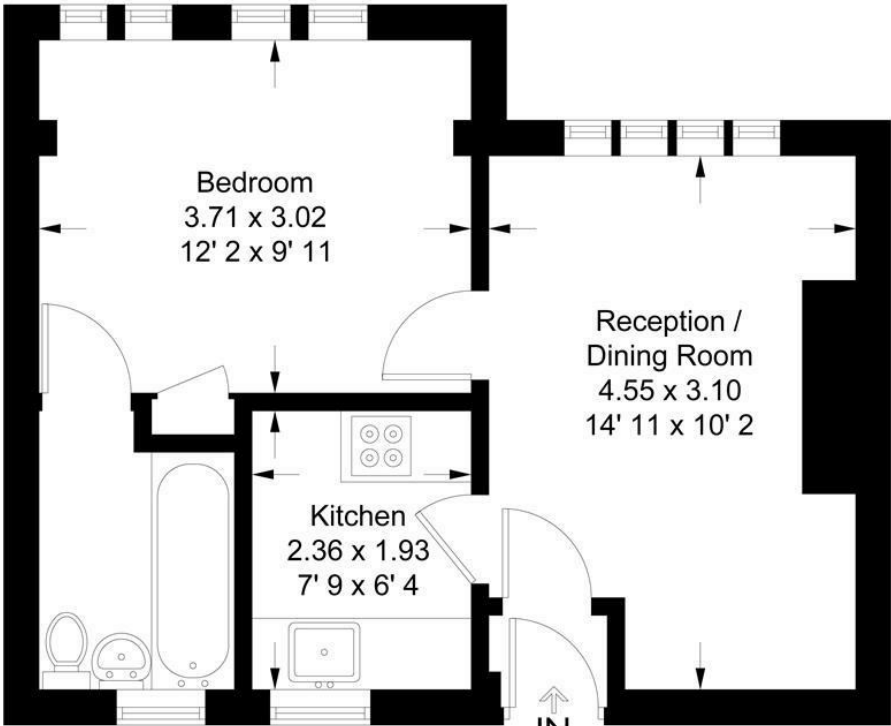
EU Directive

2002/91/EC



Coleman Court

Approximate Gross Internal Area = 386 sq ft / 35.9 sq m



Third Floor

This plan is not to scale and must be used as layout guidance only. All measurements and areas are approximate and should not be relied upon to provide accurate information. This plan must not be relied upon when making property valuations, design considerations or any other such relevant decisions. We accept no responsibility or liability (whether in contract, tort or otherwise) in relation to any loss whatsoever arising from or in connection with any use of this plan or the adequacy, accuracy or completeness of it or any information within it.

TUCKERMAN

ESTATE AGENTS

PROPERTY

PROFESSIONALS

Agents Note: Whilst every care has been taken to prepare these sales particulars, they are for guidance purposes only. All measurements are approximate are for general guidance purposes only and whilst every care has been taken to ensure their accuracy, they should not be relied upon and potential buyers are advised to recheck the measurements