



31 Marsham Street, SW1P | £3,000 Per Month



**TUCKERMAN**  
E S T A T E   A G E N T S  
PROPERTY PROFESSIONALS



# Marsham Street, Westminster

A delightful top-floor apartment offering a generous living space and private roof terrace.

The apartment features one well-appointed reception room, perfect for entertaining guests or enjoying a quiet evening at home. With two spacious bedrooms, there is ample room for relaxation and privacy. The property also boasts two contemporary bathrooms, ensuring that both residents and visitors have easy access to modern amenities.

One of the standout features of this apartment is the private terrace, providing a lovely outdoor space to unwind and enjoy the fresh air. Whether you wish to sip your morning coffee or host a small gathering, this terrace is a wonderful addition to your living experience.

Located in a great area, residents will benefit from easy access to local shops, restaurants, and public transport links, making it simple to explore all that London has to offer. Additionally, the presence of a caretaker adds an extra layer of convenience and security to the property.

In summary, Millicent Court is a charming and well-equipped apartment that combines modern living with a prime location.

**COUNCIL TAX**

Band G - Westminster City Council







# Marshall Street, Westminster

Available

Per Month: £3,000 Per Month

Furnishing: Unfurnished

Available From: 4th November 2025

Local Authority: Westminster City Council

Council Tax Band: G

Approximate Gross Internal Area:  
632.00 sq ft

Energy Efficiency Rating

	Current	Potential
<div>Very energy efficient - lower running costs</div> <div>(92 plus) A</div> <div>(81-91) B</div> <div>(69-80) C</div> <div>(55-68) D</div> <div>(39-54) E</div> <div>(21-38) F</div> <div>(1-20) G</div> <div>Not energy efficient - higher running costs</div>	<div>72</div>	<div>76</div>

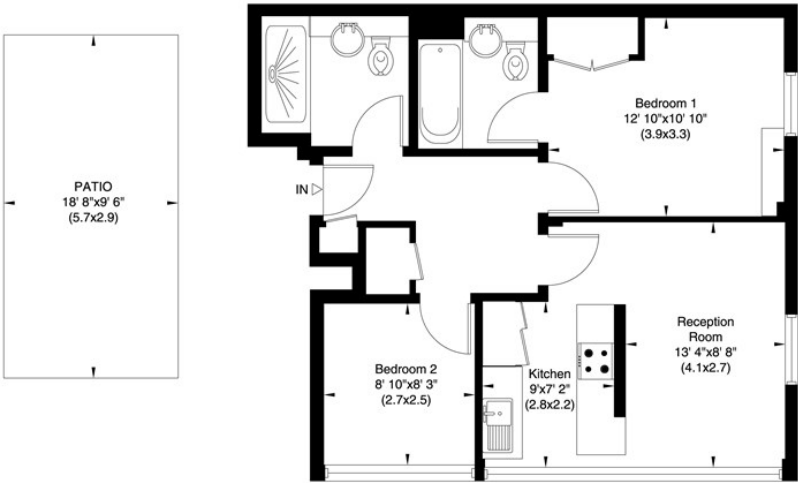
England & Wales

EU Directive

2002/91/EC

MILLCENT COURT  
MARSHAM STRET  
LONDON SW1

Gross Internal Area: 59 Sq. metres  
632 Sq.feet



SIXTH FLOOR

TUCKERMAN

ESTATE AGENTS

PROPERTY

PROFESSIONALS

Agents Note: Whilst every care has been taken to prepare these sales particulars, they are for guidance purposes only. All measurements are approximate are for general guidance purposes only and whilst every care has been taken to ensure their accuracy, they should not be relied upon and potential buyers are advised to recheck the measurements