



Fulham Road, SW3 | £1,060 Per Week



TUCKERMAN  
ESTATE AGENTS  
PROPERTY PROFESSIONALS

# Fulham Road, London

This newly decorated, interior designed superb two-bedroom apartment is set over 675sq ft located in the heart of South Kensington.

## DESCRIPTION

This stunning fourth floor, two double bedroom apartment is set in a quiet, modern portered building, located in the heart of South Kensington.

The apartment consists of large reception room and bright modern kitchen with fully integrated appliances. It also has two good sized double bedrooms with built in wardrobes, a modern bathroom and separate WC.

The property is newly decorated and is fully furnished with brand new, quality modern furniture.

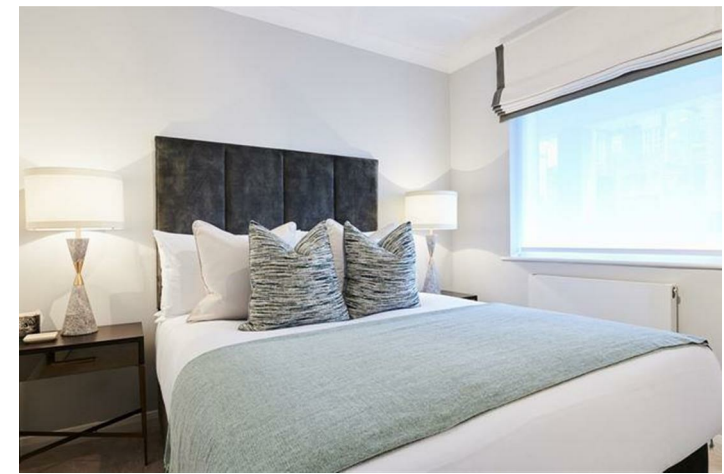
Council tax band F - Kensington and Chelsea

## LOCATION

Set in the heart of Chelsea, the property is well connected to local amenities and transport links. It is 4 minutes to South Kensington Underground, 15 Minutes to Sloane Square, 13 Minutes to Gloucester Road and 10 Minutes to Knightsbridge. There's an abundance of culture in the many galleries and restaurants around, and the iconic Harrods a mere 12 minutes away from the property.







# Fulham Road, London

Available

Per Week: £1,060 Per Week


Furnishing: Furnished/unfurnished

Available From: 22nd October 2024

Local Authority: Kensington and Chelsea  
Royal Borough Council

Council Tax Band: F

Approximate Gross Internal Area:  
675.00 sq ft

Energy Efficiency Rating		
	Current	Potential
Very energy efficient - lower running costs		
(92 plus) A		
(81-91) B		
(69-80) C		
(55-68) D		
(39-54) E		
(21-38) F		
(1-20) G		
Not energy efficient - higher running costs		
England & Wales	EU Directive 2002/91/EC	



020 7222 5510  
info@tuckermanresidential.co.uk  
52 Moreton Street, London, SW1V 2PB  
www.tuckermanresidential.co.uk

Agents Note: Whilst every care has been taken to prepare these sales particulars, they are for guidance purposes only. All measurements are approximate and for general guidance purposes only and whilst every care has been taken to ensure their accuracy, they should not be relied upon and potential buyers are advised to recheck the measurements.

TUCKERMAN  
ESTATE AGENTS  
PROPERTY PROFESSIONALS