



Abbey Orchard Street, SW1P | £1,050 Per Week



TUCKERMAN
ESTATE AGENTS
PROPERTY PROFESSIONALS

Abbey Orchard Street, Westminster

This large 957 Sq.Ft (89 sq. meter) bright and spacious two-bedroom apartment is on the Seventh (Top) floor and is located in the heart of Victoria and close to St. James Park.

The apartment has large bright bedrooms with a spacious reception area, plenty of storage space, fully fitted kitchen and 2 modern bathrooms. The apartment comes with free wifi and is set up for a Sky subscription.

Luke House offers an excellent variety of 30 newly refurbished studio, one and two-bedroom apartments, situated on the upper floors of this purpose-built development building, offering flexible accommodation to suit all requirements. The building has a dedicated building manager, wifi, laundry room and lift service.

There is an abundance of local amenities including a variety of stores along Victoria Street with the Curzon Cinema and many restaurants including the Ivy Bar and Grill and Yaatra based in the Old Westminster Fire Station. The transport links of St James's Park, Westminster and Victoria (Gatwick Express) are all within walking distance.

Residents of Luke House have easy access to some of the capital's best-known historic sights – including Buckingham Palace, the Houses of Parliament and Westminster Abbey.

Residential Land is the owner and managing agent of this property. Rent directly from us and pay no agency fees. All of our tenants benefit from a dedicated building manager who is on hand to assist with any property related issues. We also employ a dedicated team of maintenance experts and provide a 24-hour emergency helpline.

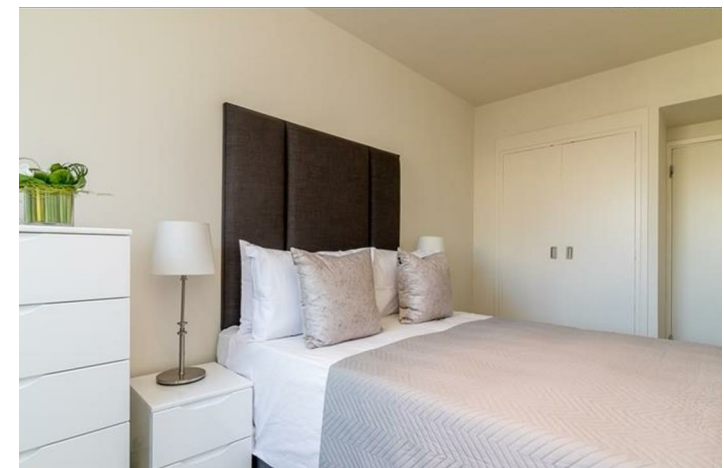
This large, bright and spacious two-bedroom apartment is on the top floor and is located in the heart of Victoria and close to St. James Park.

The apartment has a large bright bedroom with a spacious reception area, plenty of storage space, fully fitted kitchen and 2 modern bathrooms. The apartment comes with free WiFi and is set up for a Sky subscription.

Luke House offers an excellent variety of 30 newly refurbished studio, one and two-bedroom apartments, situated on the upper floors of this purpose-built development building, offering flexible accommodation to suit all requirements. The building has a dedicated building manager, secure underground parking, WiFi, laundry room and lift service.

Centrally located in Westminster, just off Victoria Street, Luke House is surrounded by shops, bars and restaurants, as well as giving easy access to the rest of the city. Residents of Luke House have easy access to some of the capital's best-known historic sights – including Buckingham Palace, the Houses of Parliament and Westminster Abbey. It is a 5-minute walk to St James's Park tube station (District line) and to Victoria tube and train station (Victoria line & Gatwick Express).





Abbey Orchard Street, Westminster

Available

Per Week: £1,050 Per Week

Furnishing: Furnished


Available From: 29th October 2024

Local Authority: Westminster City Council

Council Tax Band: G

Approximate Gross Internal Area:
957.00 sq ft

Energy Efficiency Rating

	Current	Potential
<i>Very energy efficient - lower running costs</i>		
(92 plus) A		
(81-91) B		
(69-80) C		
(55-68) D		
(39-54) E		
(21-38) F		
(1-20) G		
<i>Not energy efficient - higher running costs</i>		
England & Wales	EU Directive 2002/91/EC	



Agents Note: Whilst every care has been taken to prepare these sales particulars, they are for guidance purposes only. All measurements are approximate are for general guidance purposes only and whilst every care has been taken to ensure their accuracy, they should not be relied upon and potential buyers are advised to recheck the measurements

TUCKERMAN
ESTATE AGENTS
PROPERTY PROFESSIONALS

020 7222 5510

info@tuckermanresidential.co.uk
52 Moreton Street, London, SW1V 2PB
www.tuckermanresidential.co.uk