



Romney Street, SW1P | Asking Price £80,000



TUCKERMAN
ESTATE AGENTS
PROPERTY PROFESSIONALS

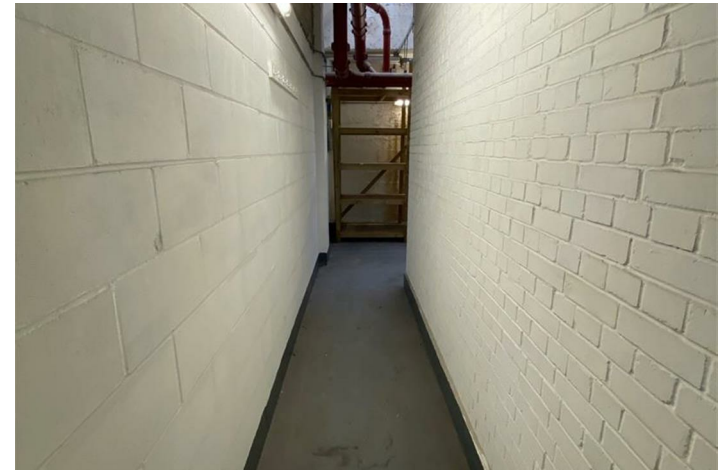
Marsham Street, Westminster

Storage Units & Parking Spaces - A unique opportunity to acquire a large storage room measuring approximately 150 square feet, a smaller storeroom of approximately 50 square feet, and two well positioned secure underground parking spaces.

Large Store
13.54 x 11.13
Height 8.23

Small Store
3.61 x 13.89





Marsham Street, Westminster

Asking Price:

£80,000 subject to contract.

Tenure:

Leasehold


Local Authority:

Council Tax Band:

G

Approximate Gross Internal Area:

0.00 sq ft

Energy Efficiency Rating		
	Current	Potential
<i>Very energy efficient - lower running costs</i>		
(92 plus) A		
(81-91) B		
(69-80) C		
(55-68) D		
(39-54) E		
(21-38) F		
(1-20) G		
<i>Not energy efficient - higher running costs</i>		
England & Wales	EU Directive 2002/91/EC	

020 7222 5510

info@tuckermanresidential.co.uk

52 Moreton Street, London, SW1PV 2PB

www.tuckermanresidential.co.uk

Agents Note: Whilst every care has been taken to prepare these sales particulars, they are for guidance purposes only. All measurements are approximate are for general guidance purposes only and whilst every care has been taken to ensure their accuracy, they should not be relied upon and potential buyers are advised to recheck the measurements

TUCKERMAN
E S T A T E A G E N T S
PROPERTY PROFESSIONALS