



Marsham Street, SW1P | £3,000 PCM



TUCKERMAN
ESTATE AGENTS
PROPERTY PROFESSIONALS

Marsham Street, Westminster

A well presented two bedroom apartment situated on the ninth (top) floor of this prestigious development in the heart of Westminster.

DESCRIPTION

The property comprises of hallway leading to: large reception room, master bedroom, fully fitted kitchen, further bedroom and bathroom. The apartment benefits from a large terrace accessed via the reception room and master bedroom. Block benefits include 24 hour concierge, lift access and communal heating and hot water.

LOCATION

Marsham Court is located close to the Palace of Westminster. Shepherd's and The Cinnamon Club compliment the extensive range of local restaurants whilst amenities, which include the flagship House of Fraser department store, are within walking distance, as are St James's, Westminster and Pimlico underground stations.





Marsham Street, Westminster

PCM:
£3,000 PCM subject to contract.

Tenure:

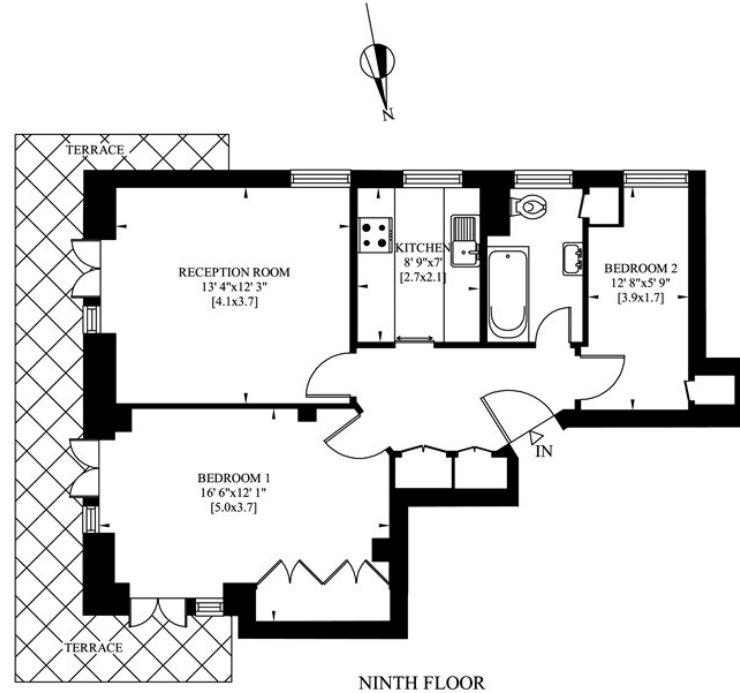
Local Authority:
Westminster City Council

Council Tax Band:
F

Approximate Gross Internal Area:
638.00 sq ft

MARSHAM COURT
MARSHAM STREET
LONDON SW1

Gross Internal Area: 59 Sq. metres
638 Sq. feet



Energy Efficiency Rating

	Current	Potential
Very energy efficient - lower running costs		
(92 plus) A		
(81-91) B		
(69-80) C		
(55-68) D	52	65
(39-54) E		
(21-38) F		
(1-20) G		
Not energy efficient - higher running costs		
England & Wales	EU Directive 2002/91/EC	

020 7222 5510

info@tuckermanresidential.co.uk
52 Moreton Street, London, SW1V 2PB
www.tuckermanresidential.co.uk

Agents Note: Whilst every care has been taken to prepare these sales particulars, they are for guidance purposes only. All measurements are approximate and for general guidance purposes only and whilst every care has been taken to ensure their accuracy, they should not be relied upon and potential buyers are advised to recheck the measurements

TUCKERMAN
ESTATE AGENTS
PROPERTY PROFESSIONALS