



97 Regency Street, SW1P | Asking Price £700,000



**TUCKERMAN**  
ESTATE AGENTS  
PROPERTY PROFESSIONALS



# Gladstone Court, Regency Street

A charming apartment located on Regency Street in the heart of London. This delightful property boasts a lovely reception room, semi-integrated kitchen, two cosy bedrooms, and a bathroom, offering a comfortable and inviting living space.

Situated in a building with a rich history dating back to the early 1900s, this apartment exudes character and charm. The property is in good condition, ensuring a hassle-free move-in experience for its new owners. With a share of freehold, you can enjoy the benefits of owning a piece of this historical building.

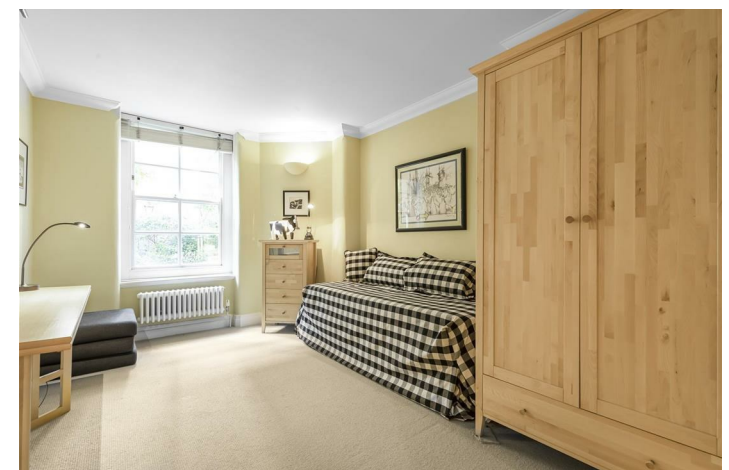
One of the standout features of this property is the resident porter, providing added security and convenience to residents. Additionally, the communal gardens offer a tranquil escape from the hustle and bustle of city life, perfect for relaxing or socialising outdoors.

For those with an active lifestyle, the on-site amenities including a bike store and gym provide the perfect opportunity to stay fit without having to leave the comfort of your home. And with the property being chain-free, you can make your move swiftly and effortlessly.

Don't miss out on the opportunity to own this wonderful apartment in a prime London location. Contact us today to arrange a viewing and take the first step towards calling this place your new home.







# Gladstone Court, Regency Street

null

Asking Price: £700,000

Furnishing: null

Available From:

Local Authority: Westminster Council

Council Tax Band: F

Approximate Gross Internal Area:  
611.00 sq ft

Energy Efficiency Rating

	Current	Potential
Very energy efficient - lower running costs		
(92 plus) <b>A</b>		
(81-91) <b>B</b>		
(69-80) <b>C</b>	68	78
(55-68) <b>D</b>		
(39-54) <b>E</b>		
(21-38) <b>F</b>		
(1-20) <b>G</b>		
Not energy efficient - higher running costs		

England & Wales

EU Directive

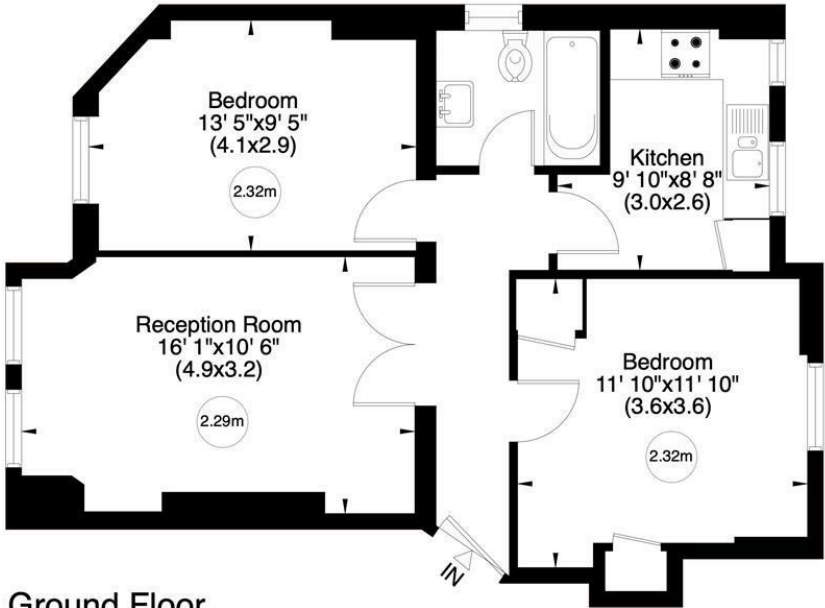
2002/91/EC

## Gladstone Court, Regency Street, SW1P

Gross internal area (approx.)

57 Sq m (611 Sq ft)

For identification only, Not to Scale



Ground Floor

[www.virtualltours.london](http://www.virtualltours.london)

Not to scale, for guidance only and must not be relied upon as a statement of fact. All measurements and areas are approximate only (and have been prepared in accordance with the current edition of the RICS Code of Measuring Practice).

020 7222 5510

info@tuckermanresidential.co.uk  
52 Moreton Street, London, SW1V 2PB  
www.tuckermanresidential.co.uk

Agents Note: Whilst every care has been taken to prepare these sales particulars, they are for guidance purposes only. All measurements are approximate are for general guidance purposes only and whilst every care has been taken to ensure their accuracy, they should not be relied upon and potential buyers are advised to recheck the measurements

TUCKERMAN

ESTATE AGENTS

PROPERTY

PROFESSIONALS