

Apartment

FLAT 1, WEBSTER HOUSE 26 GLOUCESTER STREET, LONDON, SW1V 2DN

Per Week

£575 Per

FEATURES

- Lift
- Porter



TUCKERMAN
ESTATE AGENTS
PROPERTY PROFESSIONALS

2 Bedroom Apartment located in London

A well presented two bedroom, two bathroom apartment located in the centre of the highly sought after Pimlico Grid. Perfect for sharers!

Call us on

020 7222 5510

info@tuckermanresidential.co.uk

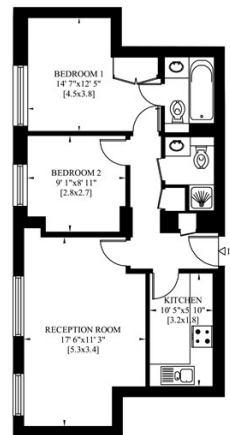
www.tuckermanresidential.co.uk

Council Tax Band

F

WEBSTER HOUSE
GLOUCESTER STREET
LONDON SW1

Gross Internal Area: 55 Sq. metres
588 Sq. feet



LOWER GROUND FLOOR

Energy Efficiency Rating		Current	Potential
<i>Very energy efficient - lower running costs</i>			
(92 plus) A			
(81-91) B			78
(69-80) C			
(55-68) D		52	
(39-54) E			
(21-38) F			
(1-20) G			
<i>Not energy efficient - higher running costs</i>			
England & Wales		EU Directive 2002/91/EC	

Agents Note: Whilst every care has been taken to prepare these particulars, they are for guidance purposes only. All measurements are approximate and are for general guidance purposes only and whilst every care has been taken to ensure their accuracy, they should not be relied upon and potential buyers are advised to recheck the measurements.

TUCKERMAN
ESTATE AGENTS
PROPERTY PROFESSIONALS