



Apartment

# FLAT 21, ASHLEY COURT MORPETH TERRACE, LONDON, SW1P 1EN

Per Week

## £425 Per

### FEATURES

- Available immediately
- Heating and Hot water included in the rent
- Resident porter
- Close to Victoria Underground and Mainline station



**TUCKERMAN**  
ESTATE AGENTS  
PROPERTY PROFESSIONALS

# 0 Bedroom Apartment located in London

A stylish and sunlit studio flat on the third floor (lift) of a beautiful block.

Call us on

020 7222 5510

[info@tuckermanresidential.co.uk](mailto:info@tuckermanresidential.co.uk)

[www.tuckermanresidential.co.uk](http://www.tuckermanresidential.co.uk)

Council Tax Band

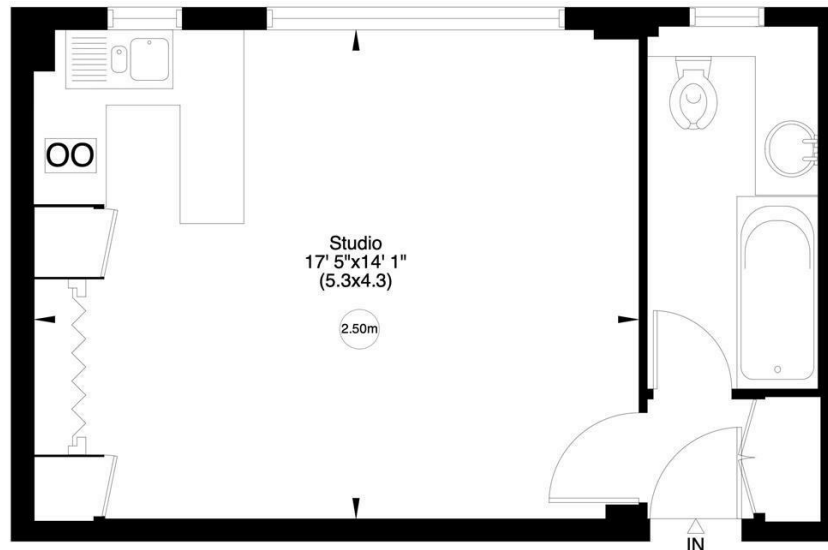
C

## Ashley Crescent, SW1P

Gross internal area (approx.)

30 Sq m (319 Sq ft)

For identification only, Not to Scale



Energy Efficiency Rating		Current	Potential
<i>Very energy efficient - lower running costs</i>			
(92 plus) A			
(81-91) B			
(69-80) C		73	81
(55-68) D			
(39-54) E			
(21-38) F			
(1-20) G			
<i>Not energy efficient - higher running costs</i>			
England & Wales		EU Directive 2002/91/EC	

Agents Note: Whilst every care has been taken to prepare these particulars, they are for guidance purposes only. All measurements are approximate and are for general guidance purposes only and whilst every care has been taken to ensure their accuracy, they should not be relied upon and potential buyers are advised to recheck the measurements.

Third Floor

[www.virtualtours.london](http://www.virtualtours.london)

Not to scale, for guidance only and must not be relied upon as a statement of fact. All measurements and areas are approximate only (and have been prepared in accordance with the current edition of the RICS Code of Measuring Practice).

**TUCKERMAN**  
ESTATE AGENTS  
PROPERTY PROFESSIONALS