

Apartment

FLAT 154, MARSHAM COURT MARSHAM STREET, LONDON, SW1P 4LB

Per Month

£2,000 Per

FEATURES



TUCKERMAN
ESTATE AGENTS
PROPERTY PROFESSIONALS

0 Bedroom Apartment located in London

A charming studio apartment located on the top floor (9th) of a prestigious building on Marsham Street, Westminster, with heating and hot water included in the rent! Available Immediately!

Call us on

020 7222 5510

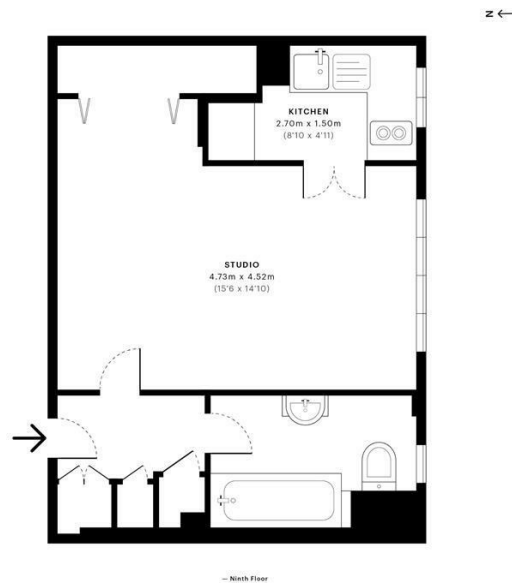
info@tuckermanresidential.co.uk

www.tuckermanresidential.co.uk

Council Tax Band

C

	Marsham Court, SW1P	GROSS INTERNAL AREA
	<small>CAPTURE DATE</small> 01/06/2020	<small>LASER SCAN POINTS</small> 14,648,444



Energy Efficiency Rating		Current	Potential
<i>Very energy efficient - lower running costs</i>			
(92 plus) A			
(81-91) B			
(69-80) C			73
(55-68) D		55	
(39-54) E			
(21-38) F			
(1-20) G			
<i>Not energy efficient - higher running costs</i>			
England & Wales		EU Directive	2002/91/EC

Agents Note: Whilst every care has been taken to prepare these particulars, they are for guidance purposes only. All measurements are approximate and are for general guidance purposes only and whilst every care has been taken to ensure their accuracy, they should not be relied upon and potential buyers are advised to recheck the measurements.

GROSS INTERNAL AREA (GIA) <small>The footprint of the property.</small> 29.8 Sqm / 320.7 Sqft	NET INTERNAL AREA (NIA) <small>Excludes walls and external features, includes airlocks, restricted head.</small> 27.6 Sqm / 296.6 Sqft	EXTERNAL STRUCTURAL FEATURES <small>Balconies, terraces, verandas etc.</small> 0.0 Sqm / 0.0 Sqft	RESTRICTED HEAD HEIGHT <small>Lowest clear area under floor</small> 0.0 Sqm / 0.0 Sqft
	<small>Spec floor plans are produced in accordance with the Royal Institution of Chartered Surveyors' Property Measurement Standards. Floors and gardens are illustrative only and are excluded from all area calculations. Due to rounding, numbers may not add up precisely. All measurements shown for the individual rooms (lengths and widths) are the maximum points of measurements captured on the scan.</small>	<small>IPMS 3B RESIDENTIAL</small> 30.2 Sqm / 324.6 Sqft <small>IPMS 3C RESIDENTIAL</small> 29.9 Sqm / 320.9 Sqft	<small>SPQ 10</small> Sec7ba0e4110402a049f0e33

TUCKERMAN
ESTATE AGENTS
PROPERTY PROFESSIONALS