

Apartment

# FLAT 114 MARSHAM COURT, MARSHAM STREET, LONDON, SW1P 4LB

Per Week

## £415 Per

### FEATURES

- Lift
- Communal Heating And Hot Water
- Porter



**TUCKERMAN**  
ESTATE AGENTS  
PROPERTY PROFESSIONALS

# 0 Bedroom Apartment located in London

A well presented first floor studio apartment, with separate sleeping area and good storage space in a secure, elegant, 1930's building with 24 hour porters. Offered furnished and inclusive of heating and hot water. Available late May.

Call us on

020 7222 5510

[info@tuckermanresidential.co.uk](mailto:info@tuckermanresidential.co.uk)

[www.tuckermanresidential.co.uk](http://www.tuckermanresidential.co.uk)

Council Tax Band

D

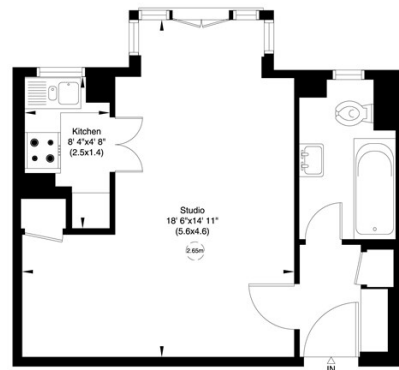
Marsham Court, Marsham Street, SW1

Gross internal area (approx.)

31 Sq m (330 Sq ft)

For identification only. Not to Scale

Floor Plan by **capital group** 020 8671 7722



First Floor

Not to scale, for guidance only and must not be relied upon as a statement of fact. All measurements and areas are approximate only (and have been prepared in accordance with the current edition of the RICS Code of Measuring Practice).

Energy Efficiency Rating		Current	Potential
<i>Very energy efficient - lower running costs</i>			
(92 plus) A			
(81-91) B			
(69-80) C		69	77
(55-68) D			
(39-54) E			
(21-38) F			
(1-20) G			
<i>Not energy efficient - higher running costs</i>			
<b>England &amp; Wales</b>		EU Directive 2002/91/EC	

Agents Note: Whilst every care has been taken to prepare these particulars, they are for guidance purposes only. All measurements are approximate and are for general guidance purposes only and whilst every care has been taken to ensure their accuracy, they should not be relied upon and potential buyers are advised to recheck the measurements.

**TUCKERMAN**  
ESTATE AGENTS  
PROPERTY PROFESSIONALS