



Room

FLAT 1 MILLICENT COURT, 31 MARSHAM STREET, LONDON, SW1P 3DW

Per Week

£675 Per

FEATURES

- Porter
- Wood floor
- Modern Furniture Package
- Underground Parking



TUCKERMAN
ESTATE AGENTS
PROPERTY PROFESSIONALS

2 Bedroom Room located in London

A well presented furnished two bed, two bath property located on the ground floor of a desirable portered block in the heart of Westminster. Available May 2024

Call us on

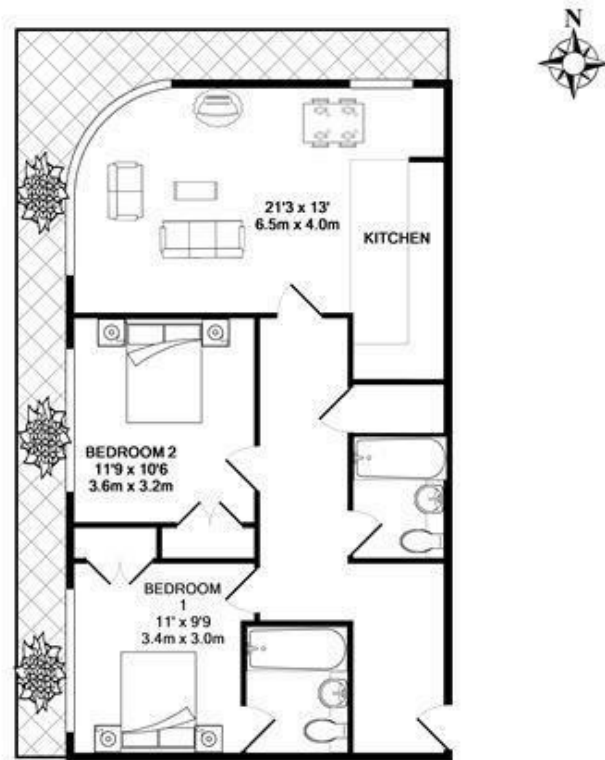
020 7222 5510

info@tuckermanresidential.co.uk

www.tuckermanresidential.co.uk

Council Tax Band

G



TOTAL APPROX. FLOOR AREA 793 SQ.FT. (73.7 SQ.M.)
 Whilst every attempt has been made to ensure the accuracy of the floor plan contained herein, measurements of doors, windows, rooms and any other items are approximate and no responsibility is taken for any error, omission, or mis-statement. This plan is for illustrative purposes only and should be used as such by any prospective purchaser. The services, systems and appliances shown have not been tested and no guarantee as to their operability or efficiency can be given.
 Made with Metropix ©2019

Energy Efficiency Rating		Current	Potential
<i>Very energy efficient - lower running costs</i>			
(92 plus) A			
(81-91) B			
(69-80) C			
(55-68) D		62	68
(39-54) E			
(21-38) F			
(1-20) G			
<i>Not energy efficient - higher running costs</i>			
England & Wales		EU Directive 2002/91/EC	

Agents Note: Whilst every care has been taken to prepare these particulars, they are for guidance purposes only. All measurements are approximate and are for general guidance purposes only and whilst every care has been taken to ensure their accuracy, they should not be relied upon and potential buyers are advised to recheck the measurements.