

LEASEHOLD



Apartment

FLAT 121, 4 WHITEHALL COURT, LONDON, SW1A 2EP

Asking Price

£1,475,000

FEATURES

- Chain Free
- 24 Hour Porter
- Close to Transport Links
- Period Building
- Close to Local Amenities



TUCKERMAN
ESTATE AGENTS
PROPERTY PROFESSIONALS

2 Bedroom Apartment located in London

Nestled within the distinguished confines of one of SW1's most prestigious buildings, this superb two-bedroom apartment beckons with an expanse that seamlessly marries opulent living and captivating entertaining areas.

Call us on

020 7222 5510

info@tuckermanresidential.co.uk

www.tuckermanresidential.co.uk

Council Tax Band

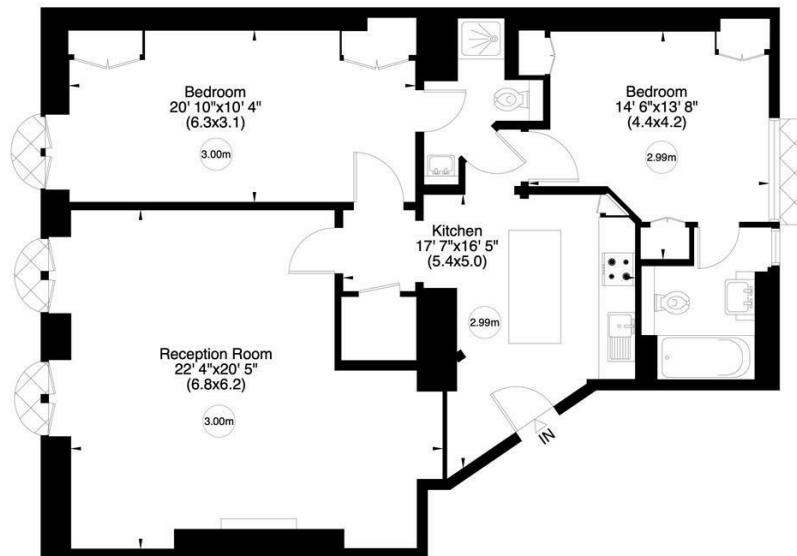
H

Whitehall Court, SW1

Gross internal area (approx.)

108 Sq m (1159 Sq ft)

For identification only, Not to Scale



Third Floor

www.virtualtours.london

Not to scale, for guidance only and must not be relied upon as a statement of fact. All measurements and areas are approximate only (and have been prepared in accordance with the current edition of the RICS Code of Measuring Practice).

Energy Efficiency Rating		Current	Potential
<i>Very energy efficient - lower running costs</i>			
(92 plus) A			
(81-91) B			
(69-80) C		72	81
(55-68) D			
(39-54) E			
(21-38) F			
(1-20) G			
<i>Not energy efficient - higher running costs</i>			
England & Wales		EU Directive	
		2002/91/EC	

Agents Note: Whilst every care has been taken to prepare these particulars, they are for guidance purposes only. All measurements are approximate and are for general guidance purposes only and whilst every care has been taken to ensure their accuracy, they should not be relied upon and potential buyers are advised to recheck the measurements.

TUCKERMAN
ESTATE AGENTS
PROPERTY PROFESSIONALS