

Two bedroom mews house within a converted stable block within Hedsor Park

The Clockhouse, Hedsor Park, Taplow, SL6

 2  2  1

Guide £1,950 p/m, plus fees may apply



# Two bedroom mews house within a converted stable block within Hedsor Park

The Clockhouse, Hedsor Park, Taplow, SL6

 2  2  1

Guide £1,950 p/m, plus fees may apply



# Two bedroom mews house within a converted stable block within Hedsor Park

The Clockhouse, Hedsor Park, Taplow, SL6

 2  2  1

Guide £1,950 p/m, plus fees may apply



## About this property

A lovely two bedroom mews house within a converted stable block and clockhouse. This property overlooks the communal courtyard and is set within the stunning grounds of the prestigious Hedsor Park.

Open plan Reception Room with Dining area and Kitchen, W.C., Upstairs Study Area, Principal Bedroom with ensuite Bathroom, Second Bedroom with ensuite shower room, communal gardens.

The Clockhouse is situated within Hedsor Park, a privately owned rural estate, adjacent to The National Trust's Cliveden Estate. This central location makes it accessible to both the M40 J2 (4 miles/6.4km) and M4 J7 (5 miles/8 km). Heathrow Airport and Central London are both within easy reach of the property. A regular train service operates from both Slough and Beaconsfield with connections to London, The Midlands and the South.



# Two bedroom mews house within a converted stable block within Hedsor Park

The Clockhouse, Hedsor Park, Taplow, SL6



Guide £1,950 p/m, plus fees may apply

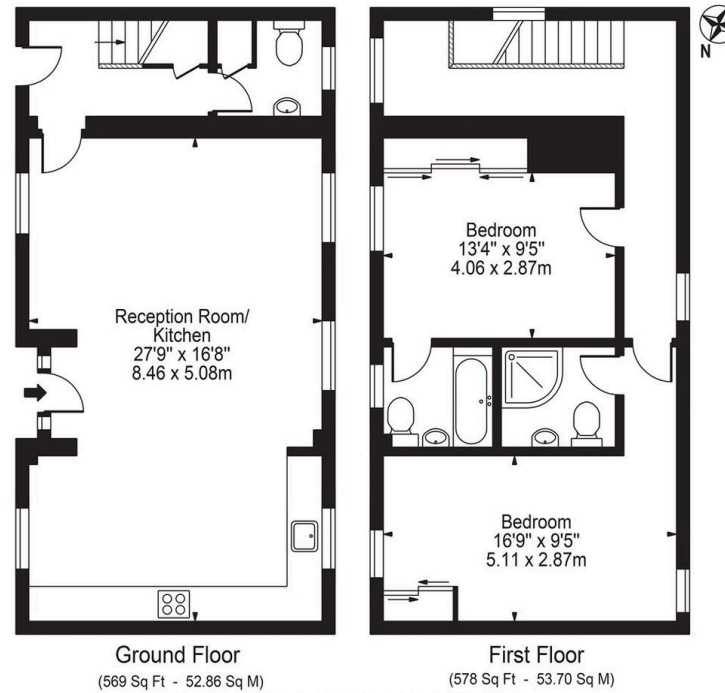


## Plans

Approx. gross internal floor area

1,147 sq ft

### Hedsor Park, SL6 Approx. Gross Internal Area 1147 Sq Ft - 106.56 Sq M



For Illustration Purposes Only - Not To Scale

This floor plan should be used as a general outline for guidance only and does not constitute in whole or in part an offer or contract. Any intending purchaser or lessee should satisfy themselves by inspection, searches, enquiries and full survey as to the correctness of each statement. Any areas, measurements or distances quoted are approximate and should not be used to value a property or be the basis of any sale or let.

Two bedroom mews house within a converted stable block within Hedsor Park

The Clockhouse, Hedsor Park, Taplow, SL6



Guide £1,950 p/m, plus fees may apply



## Key Information

### Local Authority

Wycombe

### Council Tax

Band = E

### Furnishing

Unfurnished

### Available From

01/09/2024

### Additional Payments

Deposit: £2,250.00

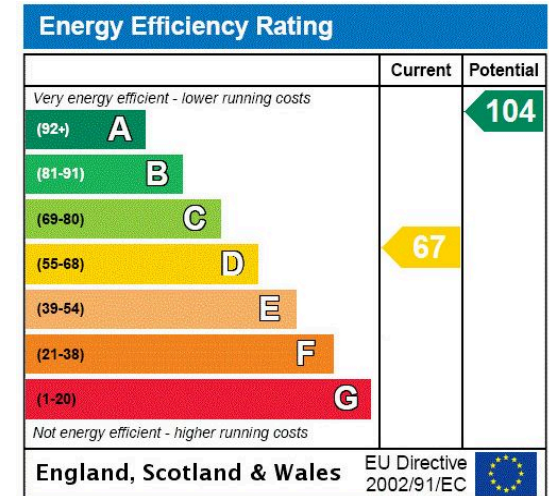
Holding Deposit: £450.00

Rent must be paid monthly in advance

### Services & Additional Information

### EPC

EPC Rating = D



# Two bedroom mews house within a converted stable block within Hedsor Park

The Clockhouse, Hedsor Park, Taplow, SL6



Guide £1,950 p/m, plus fees may apply



## Enquire



**Daniel Spratley**

Beaconsfield Lettings  
+44 (0) 1494 731 960  
daniel.spratley@savills.com

## More Information



[View on website](#)



[View Digital Brochure](#)



[Property Search](#)

**Viewing strictly by appointment**

Published: July 2024  
Property Ref: BCL090018



Important Notice: Savills, their clients and any joint agents give notice that: 1. They are not authorised to make or give any representations or warranties in relation to the property either here or elsewhere, either on their own behalf or on behalf of their client or otherwise. They assume no responsibility for any statement that may be made in these particulars. These particulars do not form part of any offer or contract and must not be relied upon as statements or representations of fact. 2. Any areas, measurements or distances are approximate. The text, images and plans are for guidance only and are not necessarily comprehensive. It should not be assumed that the property has all necessary planning, building regulation or other consents and Savills have not tested any services, equipment or facilities. Prospective tenants must satisfy themselves by inspection or otherwise. Please note that the local area may be affected by aircraft noise, you should make your own enquiries regarding any noise within the area before you make any offer.

\*There are different rules and fees for different tenancy types. For details of our fees and charges please go to [Savills.co.uk/tenant-fees](https://www.savills.co.uk/tenant-fees). For more detailed information read our applicant guide at [savills.co.uk/applicant-guide](https://www.savills.co.uk/applicant-guide).