



Hoy Close, NW9

£650,000

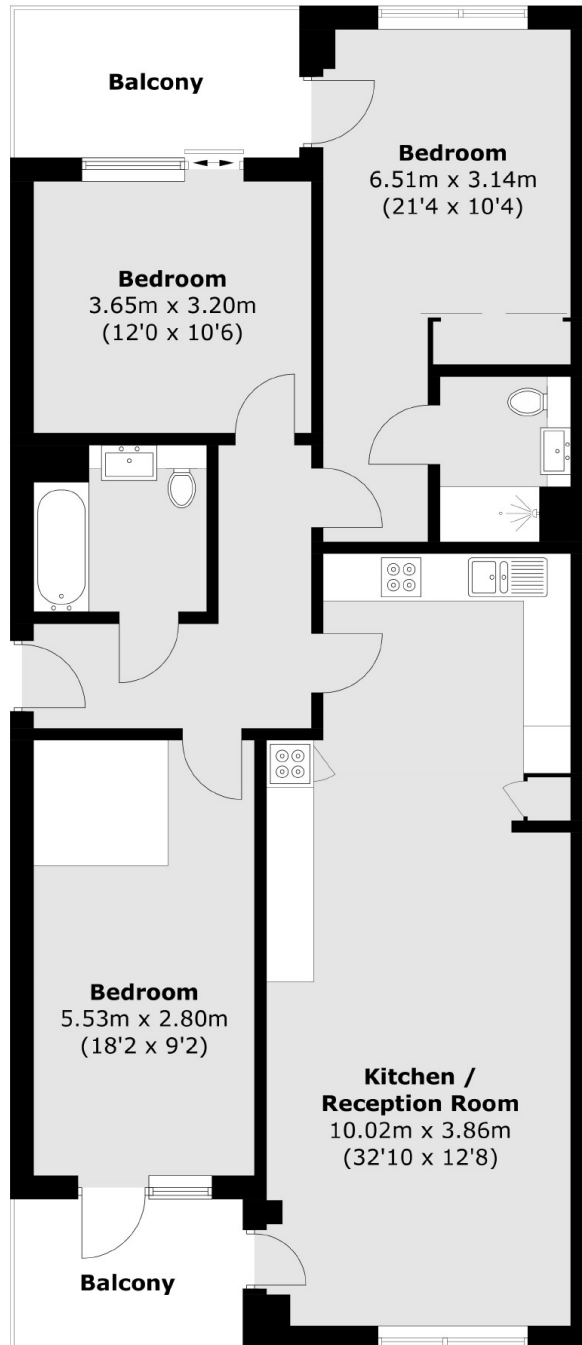
A fantastic three double bedroom flat set within the high end Redrow development. This luxurious apartment comes with two bathrooms, three large double bedrooms with bespoke wardrobes fitted, two balconies and a large open plan kitchen living area with additional cupboard space.

This fabulous property is located within minutes of Colindale Underground station (Northern Line) and lots of amenities such as a gym, local shops and restaurants.

Features

- Colindale Gardens
- Two Private Balconies
- Underground Parking
- Gym
- High Specification
- Three Double Bedrooms

Hoy Close, London, NW9



Total area (approx.): 100.1 sq. m (1077.5 sq. ft)
Balcony: 12.2 sq. m (131.3 sq. ft)