

## Perryfield Way, NW9

£625,000

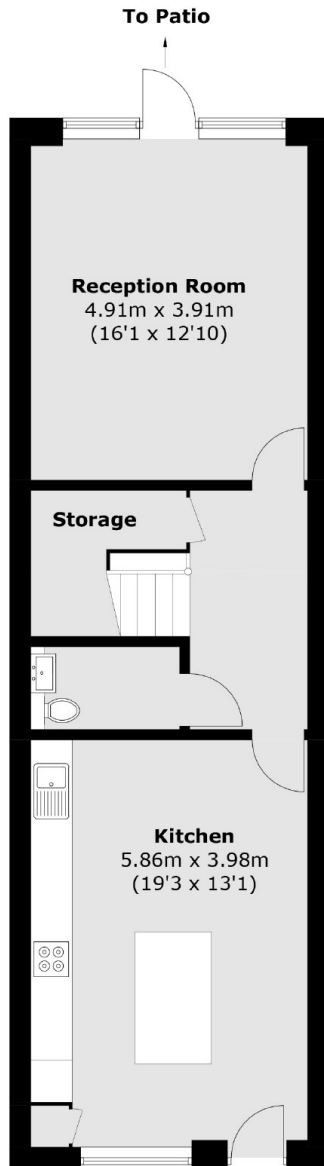
This fantastic 3 bedroom split level maisonette consists of three large double bedrooms, two large bathrooms, one being an en-suite. A large kitchen dining area with high specification fitted appliances. Then a bright lounge with direct access onto a private patio.

This fabulous modern development is within close proximity of the Welsh Harp Reservoir, and is conveniently located close to Brent Cross Shopping Centre and 5 minutes from Hendon Thameslink Station.

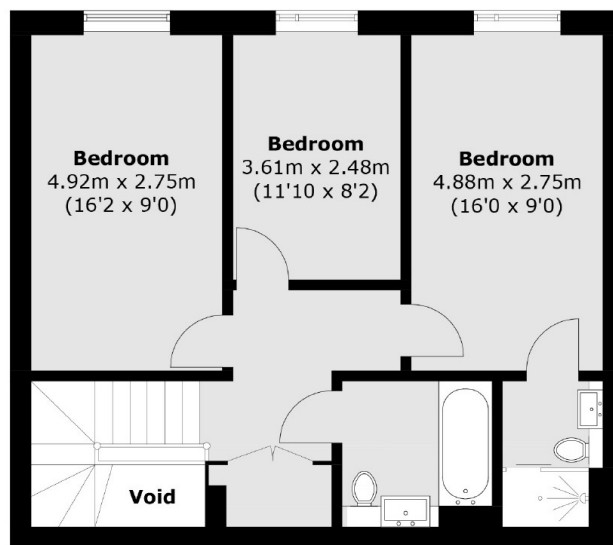
### Features

- Hendon Waterside
- Gym & Concierge
- Underground Parking (EV)
- Separate WC
- Three Double Bedrooms
- Split Level

# Perryfield Way, London, NW9



**Ground Floor**



**First Floor**

Total area (approx.): 116.5 sq. m (1253.9 sq. ft)