

Edgeworth Crescent, NW4
£2,850,000

Dexters



Edgeworth Crescent, NW4

An absolutely amazing detached house on one of Hendon's most popular roads. This incredible five bedroom house has been completely rebuilt on piling foundations to the very highest standard and has a large swimming pool.

As you approach this stunning detached house there is a large driveway for several cars and retractable posts for security. As you enter the home you are greeted by a huge entertaining space, a family bathroom, beautiful Versace tiles and a fully integrated kitchen with Smeg appliances. This leads onto a large terrace overlooking garden that comes with fully fitted irrigation system and separate outbuilding.

On the lower ground floor there is a separate study, boiler room, light well, bathroom and an amazing two metre deep swimming pool with integrated jacuzzi and a lounge area. On the upper floors there are four large double bedrooms with fully fitted wardrobes and four more bathrooms (all en suite) that also comes with versace tiles.

Conveniently located within easy access of Middlesex University, Hendon Mainline Station and Hendon Central Underground Station.

Features

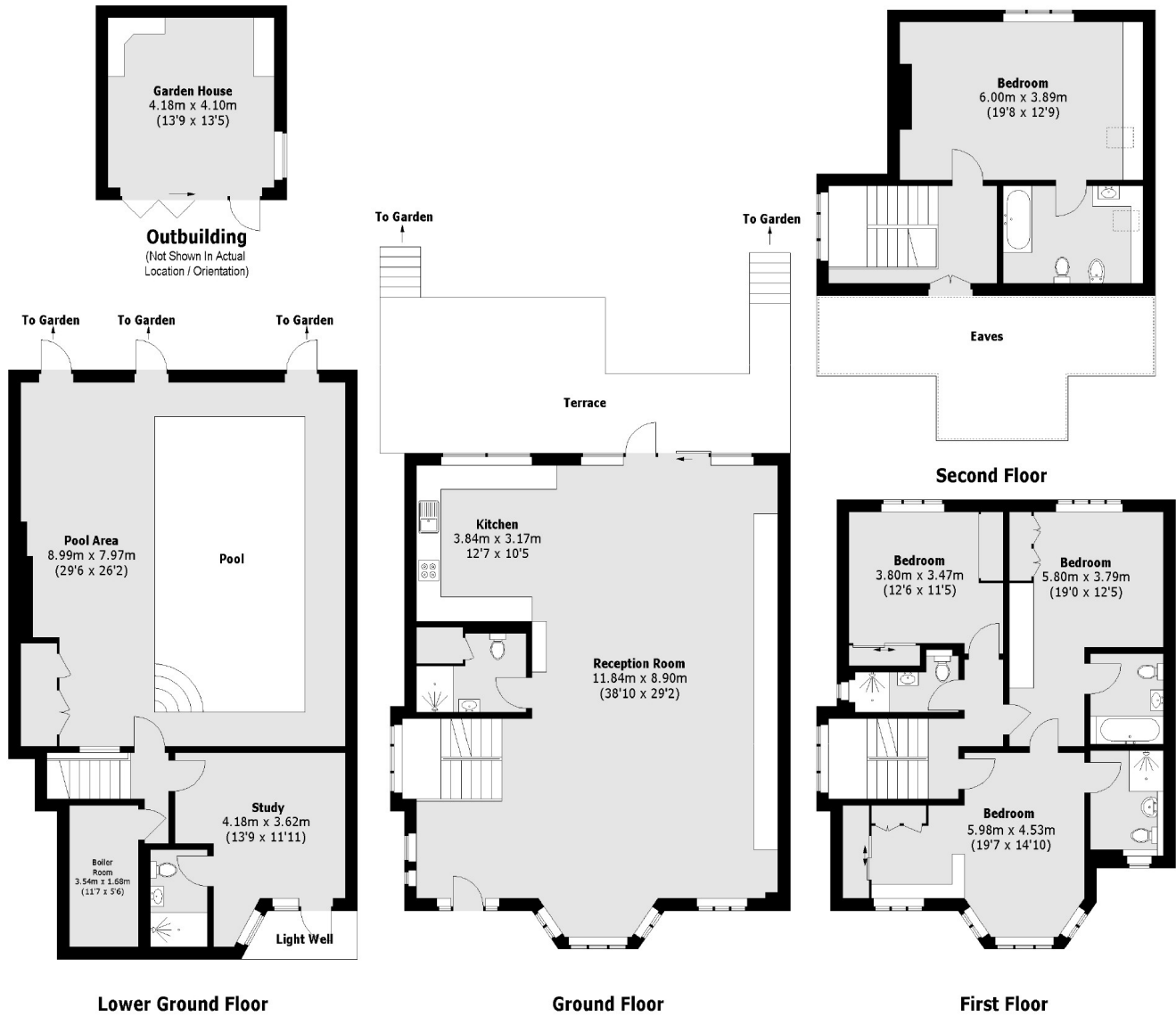
- Swimming Pool
- Five Bedrooms
- Detached
- Versace Tiles
- Six Bathrooms
- Driveway







Edgeworth Crescent, London, NW4



Total area (approx.): 321.27 sq. m (3458 sq. ft)
(Excluding Eaves)
Outbuilding: 17.92 sq. m (193 sq. ft)
Terrace: 34.49 sq. m (371 sq. ft)