



Barton Close, NW4

£2,000 Per calendar month

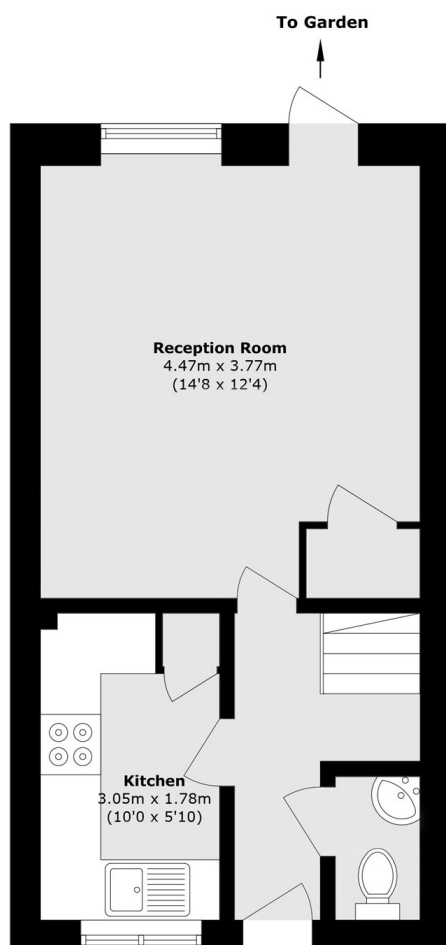
A delightful two double bedroom modern house in this pretty quiet cul-de-sac off Endersleigh Gardens with a separate kitchen, spacious lounge, downstairs guest WC, family bathroom/WC, rear garden, and off street parking.

Situated in the residential location and within easy reach of all amenities in Hendon Central, and a short drive to Colindale, Brent Cross and Golders Green

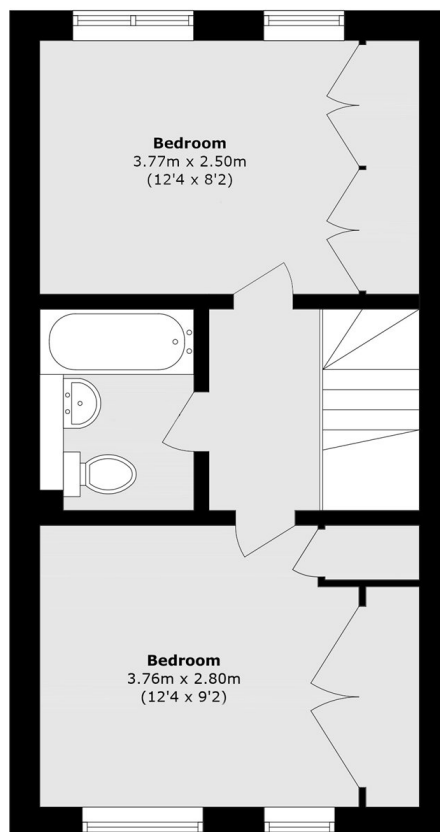
Features

- Quiet Location
- Close to Local Amenities
- Double Bedrooms
- Guest WC
- Garden
- Off Street Parking

Barton Close, Hendon, NW4



Ground Floor



First Floor

Total area (approx.): 57.4 sq. m (617.8 sq. ft)