



Downage, NW4

£1,500,000

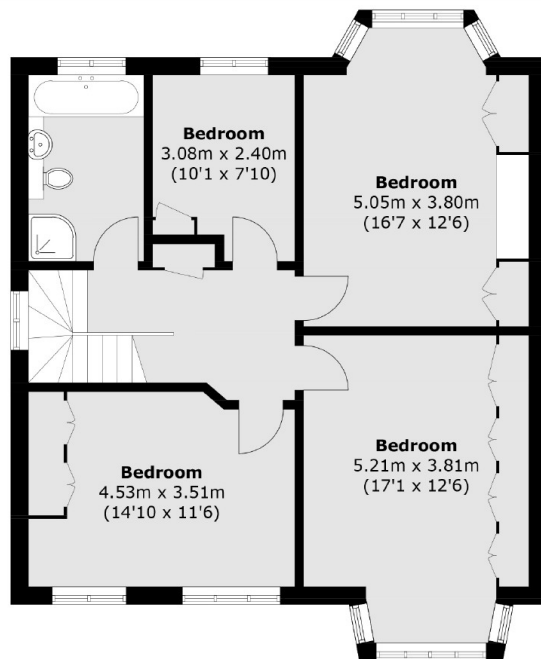
An excellent opportunity to purchase this rarely available four bedroom detached house with potential to extend (subject to necessary consents), featuring an exceptionally large garden.

Downage is one of Hendon's most prestigious streets and is situated within easy access of Brent Street's shopping and transport facilities as well as Sunny Hill Park.

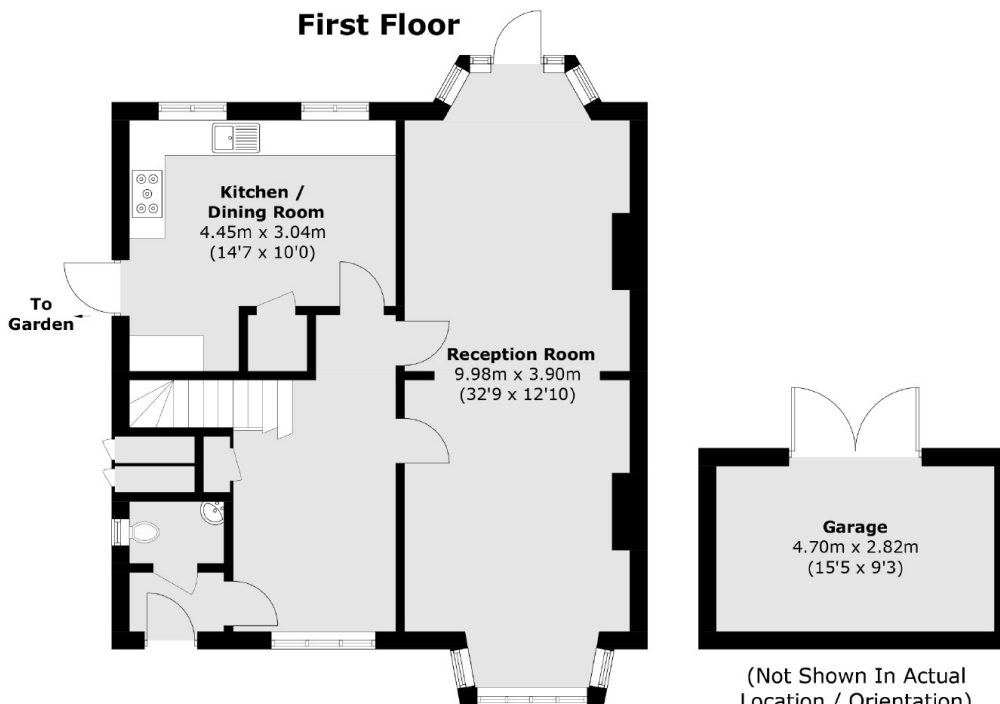
Features

- Premier Location
- Detached House
- Four Bedrooms
- Large Garden
- Garage
- Off-Street Parking

Downage, London, NW4



First Floor



Ground Floor

Total area (approx.): 154.0 sq. m (1,658.0 sq. ft)
Garage (approx.): 13.5 sq. m (145.3 sq. ft)

Dexters

Hendon
18 Central Circus
London
NW4 3AS
Sales
020 8545 8586

Energy Rating: . We aim to make our particulars both accurate and reliable. However they are not guaranteed; nor do they form part of an offer or contract. If you require clarification on any points then please contact us, especially if you're traveling some distance to view. Please note that appliances and heating systems have not been tested and therefore no warranties can be given as to their good working order.

 **RICS** | Regulated
Estate Agent
and Letting Agent

[dexters.co.uk](https://www.dexters.co.uk)