



High Mount, NW4

£360,000

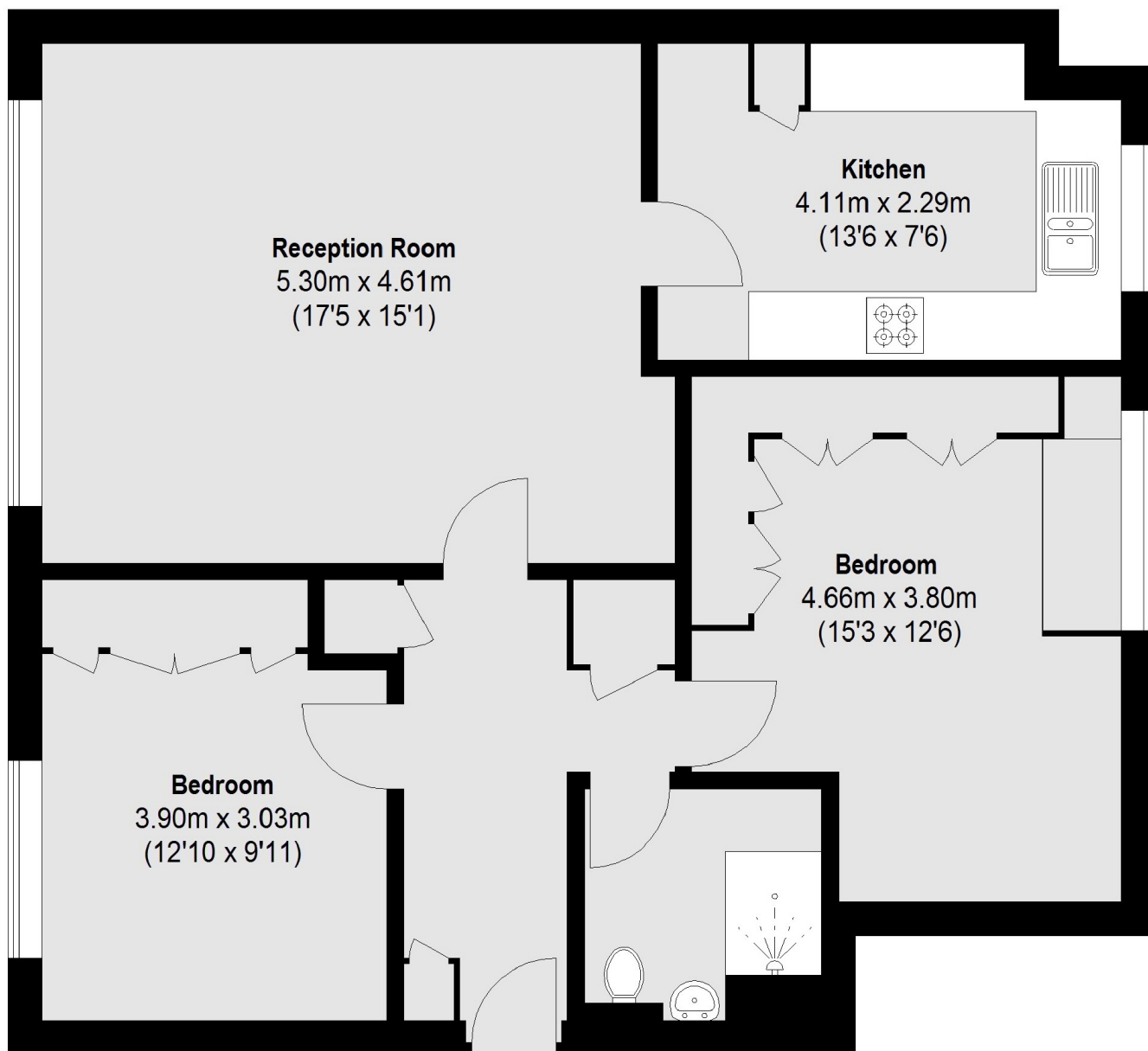
A spacious two double bedroom apartment in this popular purpose built portered block with lift. This delightful apartment benefits from a large reception and kitchen, secure parking, visitors parking and beautifully maintained communal gardens.

High Mount is conveniently located within easy reach of both Hendon Central Underground Station and Hendon Thameslink Station.

Features

856 sq ft
Two Double Bedrooms
Portered Block
Lift
Secure Parking
Communal Gardens

High Mount, London, NW4



Dexters

Hendon
18 Central Circus
London
NW4 3AS
Sales
020 8545 8586

Energy Rating: E. We aim to make our particulars both accurate and reliable. However they are not guaranteed; nor do they form part of an offer or contract. If you require clarification on any points then please contact us, especially if you're traveling some distance to view. Please note that appliances and heating systems have not been tested and therefore no warranties can be given as to their good working order.

RICS Regulated
Estate Agent
and Letting Agent

dexters.co.uk