



Shearwater Drive, NW9

£1,450 Per calendar month

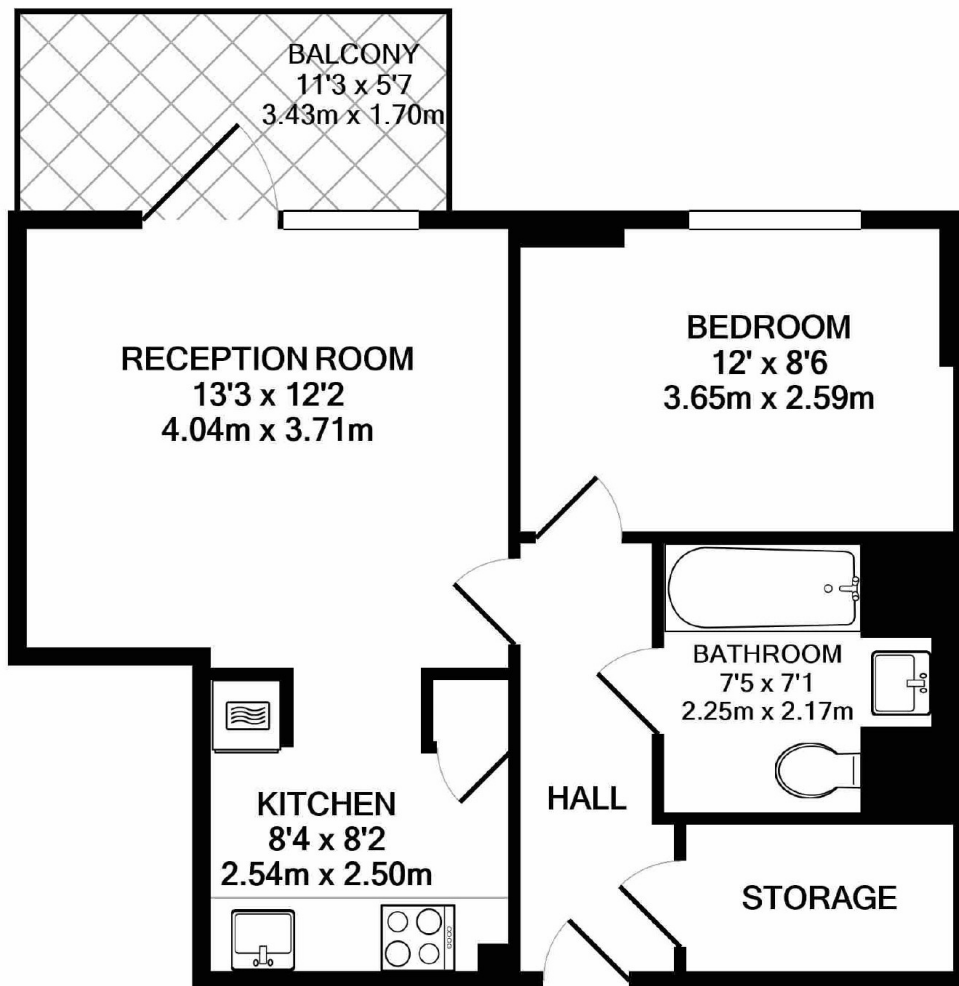
A modern one double bedroom apartment on the first floor, located in Hendon Waterside. This apartment comes with a double bedroom, open plan living and kitchen area, private balcony, and communal gardens.

This lovely modern development is idyllically located on the waterside, and is within easy access of Hendon Thameslink station and Hendon Central underground station.

Features

- Sought After Development
- Spacious Apartment
- Private Balcony
- Communal Gardens
- Good Condition
- Close to Local Amenities

Shearwater Drive, London, NW9



FIRST FLOOR

TAWNY COURT NW9
TOTAL APPROX. FLOOR AREA 478 SQ.FT. (44.4 SQ.M.)
Measurements are approximate. Not to scale. Illustrative purposes only

