



Hall Lane, NW4

£2,950 Per calendar month

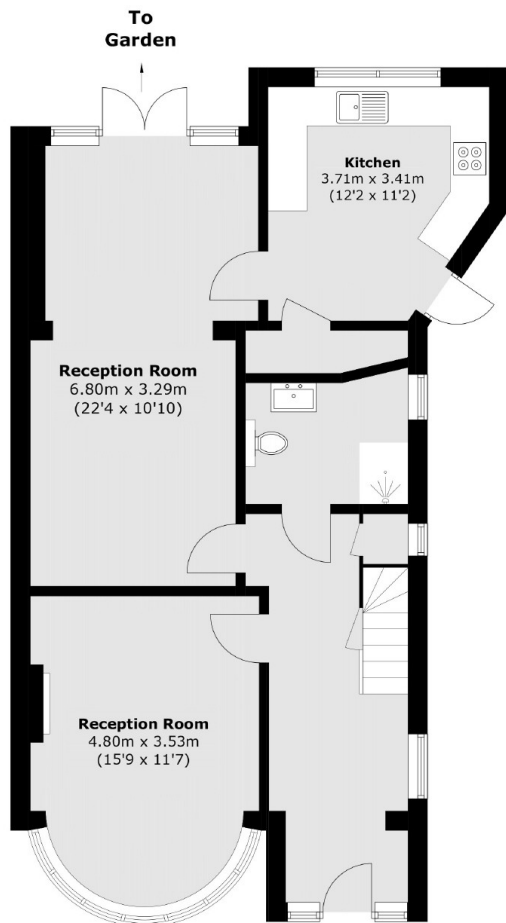
A lovely three/four bedroom semi detached family home offering spacious bedrooms, reception with dining area, fitted kitchen with utility room, family bathroom/WC, separate shower/WC, rear garden with decked area and lawn, and off street parking for two cars.

Within easy reach of Hendon Central and Mill Hill and a short distance from popular Sunny Hill Park and Middlesex University

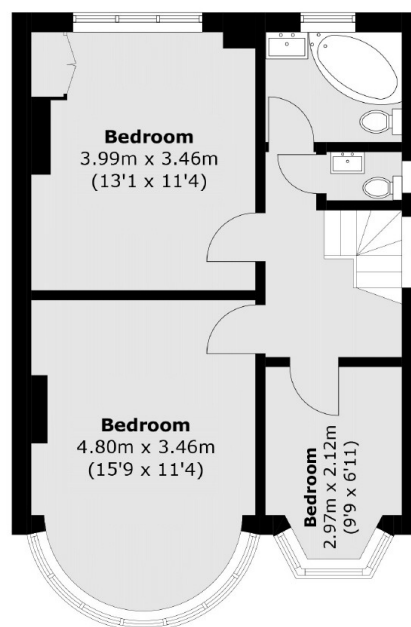
Features

- Family Home
- Close to Local Amenities
- Two Bathrooms
- Good Condition
- Garden
- Off Street Parking

Hall Lane, London, NW4



Ground Floor



First Floor

Total area (approx.): 118.9 sq. m (1,279.8 sq. ft)
(Excluding Eaves)