



Talbot Crescent, NW4

£1,250,000

Nestled within the highly sought after Edgeworth Estate, this charming five bedroom detached house offers a rare combination of generous lateral space, versatile living areas and is being offered chain free.

Talbot Crescent is located within the ever popular Edgeworth Estate, conveniently located for easy access of both Hendon Central underground station and Hendon Thameslink station.

Features

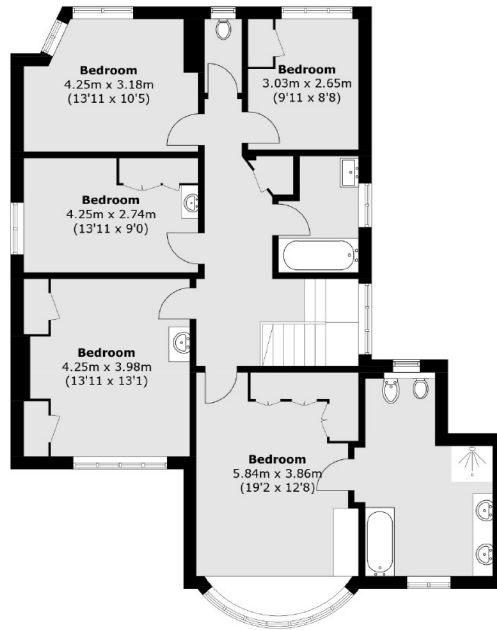
- Detached House
- Five Bedrooms
- Three Receptions Rooms
- Garage
- Driveway
- Chain Free



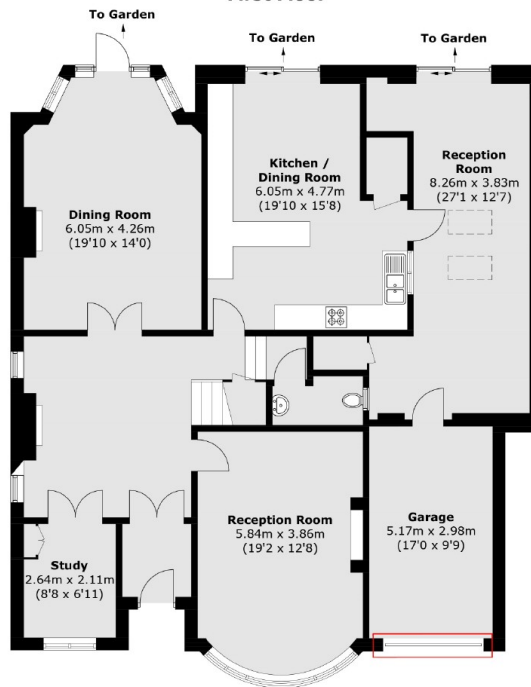
Talbot Crescent, NW4



Talbot Crescent, London, NW4



First Floor



Ground Floor

Total area (approx.): 266.6 sq. m (2,869.7 sq. ft)
(Including Garage)