



## Robin Lane, NW4

### £575,000

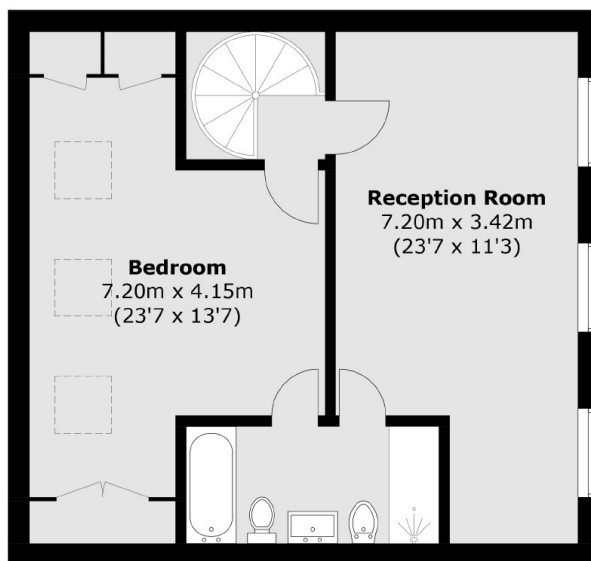
An excellent and very generous three bedroom semi-detached chalet bungalow. This lovely home is offered chain free, has a luscious large garden, private driveway and two big bathrooms.

Located in this quiet cul-de-sac, near to Hendon Golf Course and Windsor Open Space and is close proximity to Parsons Street and Brent Street. This property has good connections to the A1, M1 and A406.

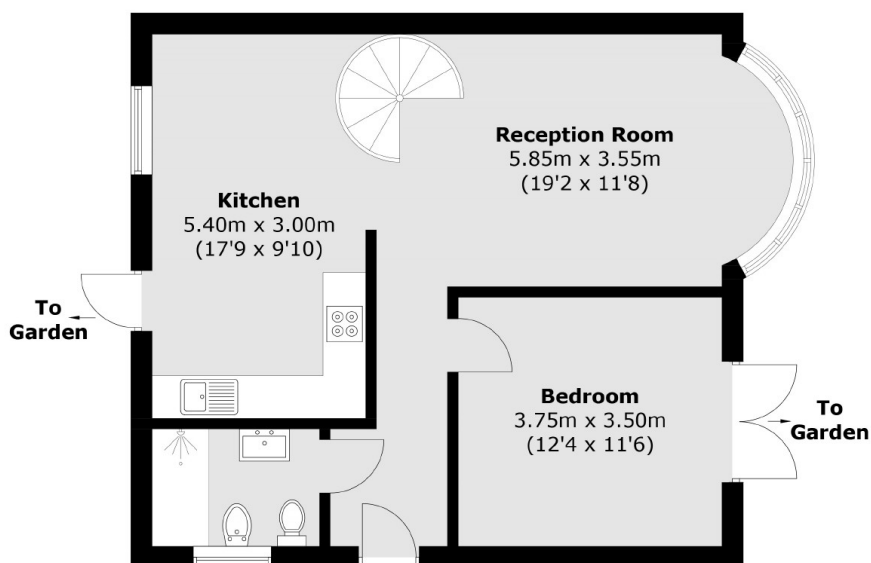
### Features

- Chain Free
- Chalet Bungalow
- Private Driveway
- Big Garden
- Three Bedrooms
- Two Bathrooms

Robin Lane,  
London, NW4



**First Floor**



**Ground Floor**

Total area (approx.): 115.6 sq. m (1,244.3 sq. ft)