



## Neeld Crescent, NW4

£470,000

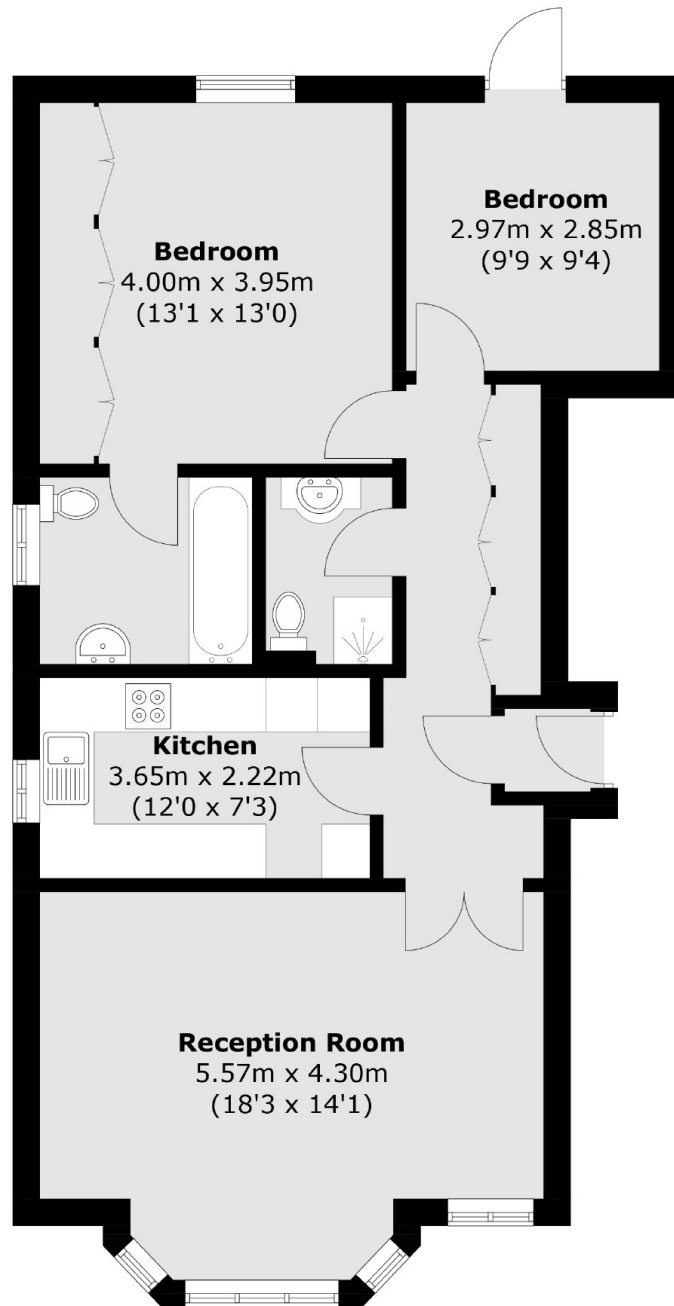
A fantastic two double bedroom ground floor flat located within this handsome purpose built block. This lovely home comes with two bathrooms, parking, a separate kitchen and is offered chain free.

Neeld Crescent is a popular leafy family street and is nearby Hendon Central's multiple shops, cafés, restaurants and parks. Hendon Central tube station (Northern Line) is also very close proximity.

### Features

Two Double Bedrooms  
Parking  
Chain Free  
Ground Floor  
Excellent Transport Links  
Separate Kitchen

Neeld Crescent,  
London, NW4



**Ground Floor**

Total area (approx.): 74.4 sq. m (800.8 sq. ft)

**Dexters**

Hendon  
18 Central Circus  
London  
NW4 3AS  
Sales  
020 8545 8586

Energy Rating: C. We aim to make our particulars both accurate and reliable. However they are not guaranteed; nor do they form part of an offer or contract. If you require clarification on any points then please contact us, especially if you're traveling some distance to view. Please note that appliances and heating systems have not been tested and therefore no warranties can be given as to their good working order.

 **RICS** | Regulated  
Estate Agent  
and Letting Agent

[dexters.co.uk](https://www.dexters.co.uk)