



Great North Way, NW4 £350,000

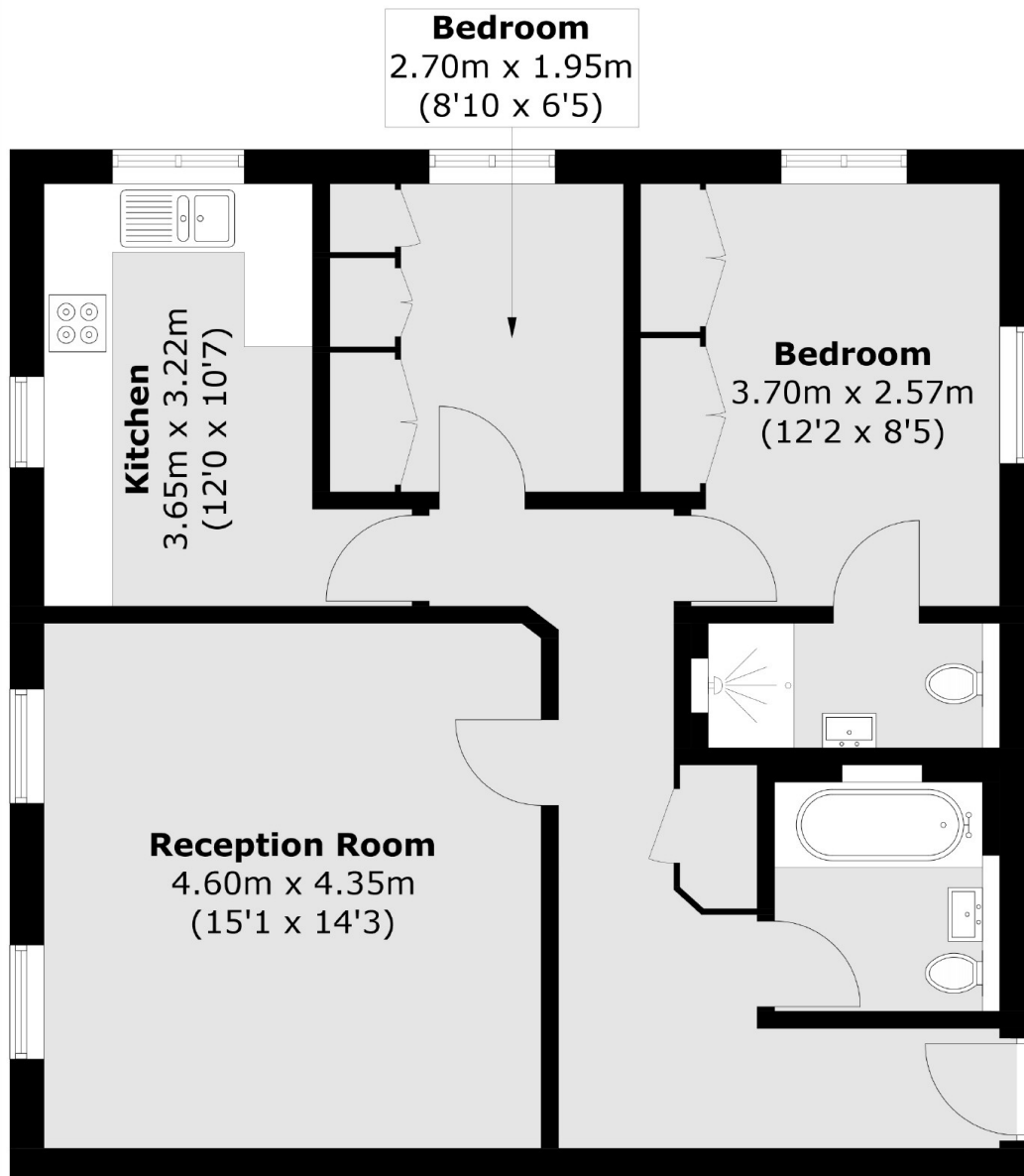
An excellent opportunity to purchase this two bedroom flat located within this popular purpose-built block with lift. This property benefits from two bathrooms, a separate kitchen and secure gated parking.

Conifer Court is conveniently located close to main arterial routes, Copthall Leisure Centre, Sunny Hill Park and the exclusive Laboratory Health Club and Spa.

Features

Purpose-Built Block With Lift
Two Bedrooms
Two Bathrooms
Parking
Separate Kitchen
Chain Free

Great North Way, London, NW4



Total area (approx.): 70.8 sq. m (762.1 sq. ft)

Dexters

Hendon
18 Central Circus
London
NW4 3AS
Sales
020 8545 8586

Energy Rating: C. We aim to make our particulars both accurate and reliable. However they are not guaranteed; nor do they form part of an offer or contract. If you require clarification on any points then please contact us, especially if you're traveling some distance to view. Please note that appliances and heating systems have not been tested and therefore no warranties can be given as to their good working order.

 **RICS** | Regulated
Estate Agent
and Letting Agent

[dexters.co.uk](https://www.dexters.co.uk)