



Ashley Lane, NW4

£695,000

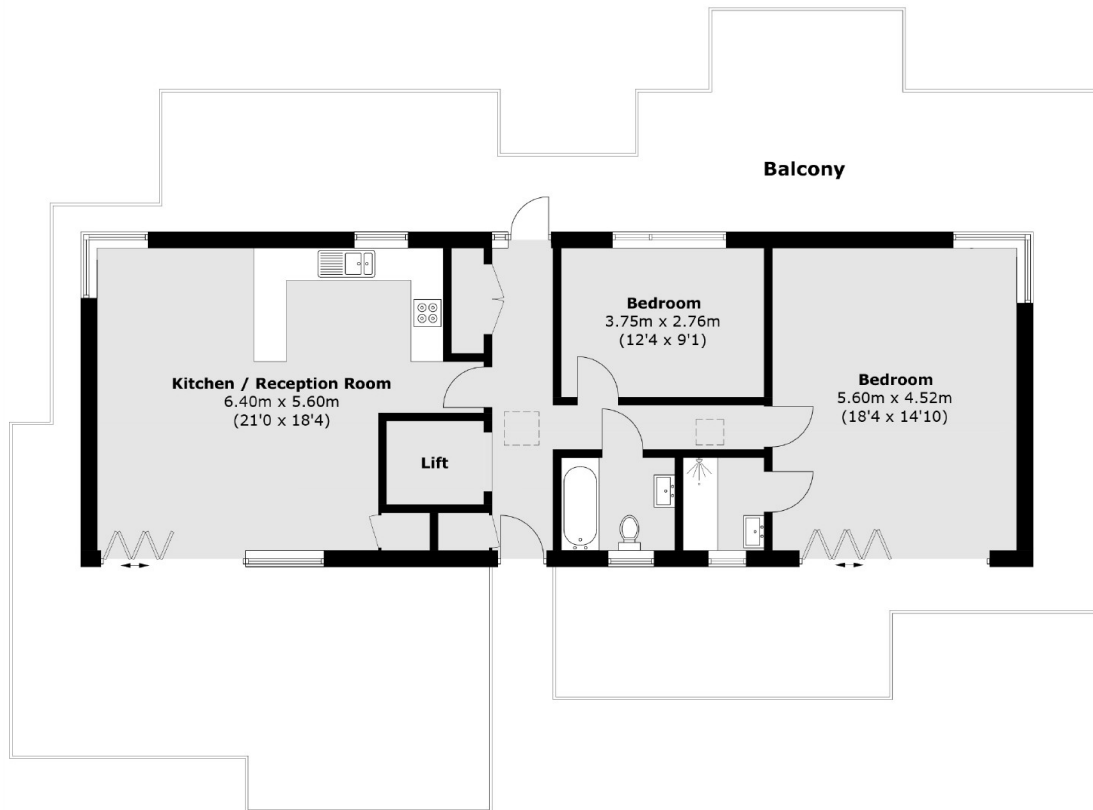
A fantastic two bedroom flat located on the top floor of this purpose-built block. This chain free home has two bedrooms, two bathrooms, a balcony and private parking.

Ashley Lane is a highly desirable location in Hendon close to the Golf Course and Dollis Brook. The property also has great transport links such as Mill Hill East tube station which is nearby.

Features

- Two Bedrooms
- Two Bathrooms
- Private Parking
- Top Floor Flat
- Balcony
- Desirable Location

Ashley Lane, London, NW4



Total area (approx.): 96.4 sq. m (1037.6 sq. ft)
(Including Lift)
Balcony : 223.1 sq. m (2401.4 sq .ft)

Dexters

Hendon
18 Central Circus
London
NW4 3AS
Sales
020 8545 8586

Energy Rating: . We aim to make our particulars both accurate and reliable. However they are not guaranteed; nor do they form part of an offer or contract. If you require clarification on any points then please contact us, especially if you're traveling some distance to view. Please note that appliances and heating systems have not been tested and therefore no warranties can be given as to their good working order.

 **RICS** | Regulated
Estate Agent
and Letting Agent

[dexters.co.uk](https://www.dexters.co.uk)