



Watford Way, NW4

£375,000

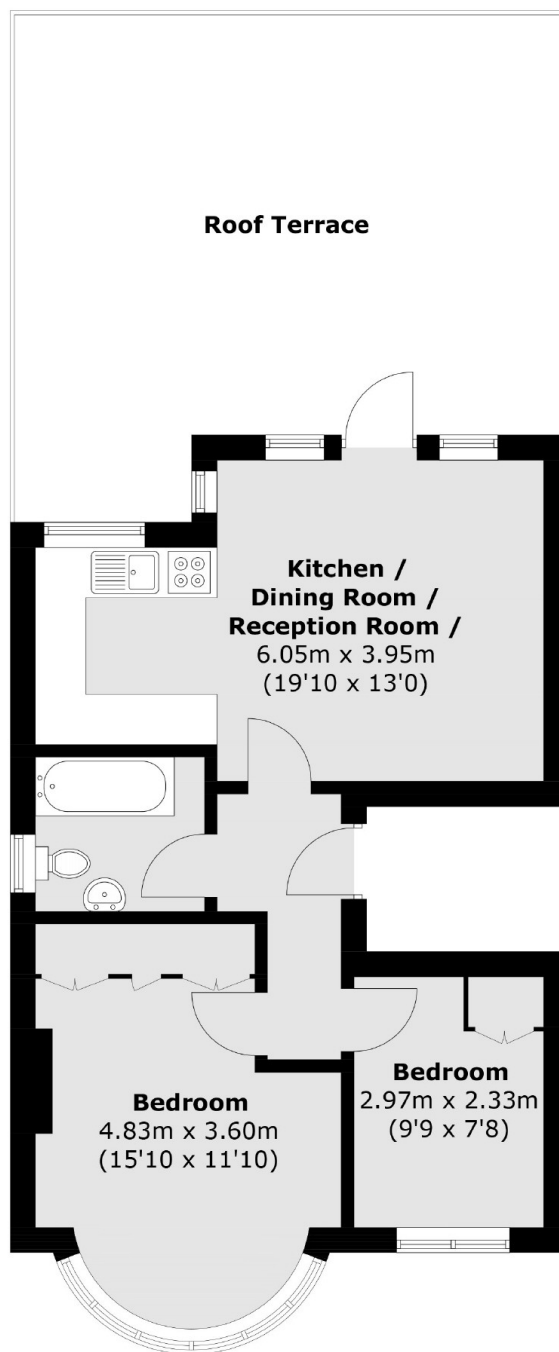
A charming two bed flat located on Watford Way. The property has been recently refurbished to a high standard, benefitting from a private garden, parking on the driveway and is being sold chain free.

This flat on Watford Way is located within easy access of Hendon Central underground station, Middlesex University, Brent Street and Sunny Hill Park.

Features

- Period Conversion
- No Chain
- Two Bedrooms
- Recently Refurbished
- Parking
- Private Garden

Watford Way, London, NW4



Total area (approx.): 50.3 sq. m (541.4 sq. ft)
Roof Terrace : 35.0 sq. m (376.4 sq. ft)

Dexters

Hendon
18 Central Circus
London
NW4 3AS
Sales
020 8545 8586

Energy Rating: C. We aim to make our particulars both accurate and reliable. However they are not guaranteed; nor do they form part of an offer or contract. If you require clarification on any points then please contact us, especially if you're traveling some distance to view. Please note that appliances and heating systems have not been tested and therefore no warranties can be given as to their good working order.

 **RICS** | Regulated
Estate Agent
and Letting Agent

[dexters.co.uk](https://www.dexters.co.uk)