

Aerodrome Road, NW9

£545,000

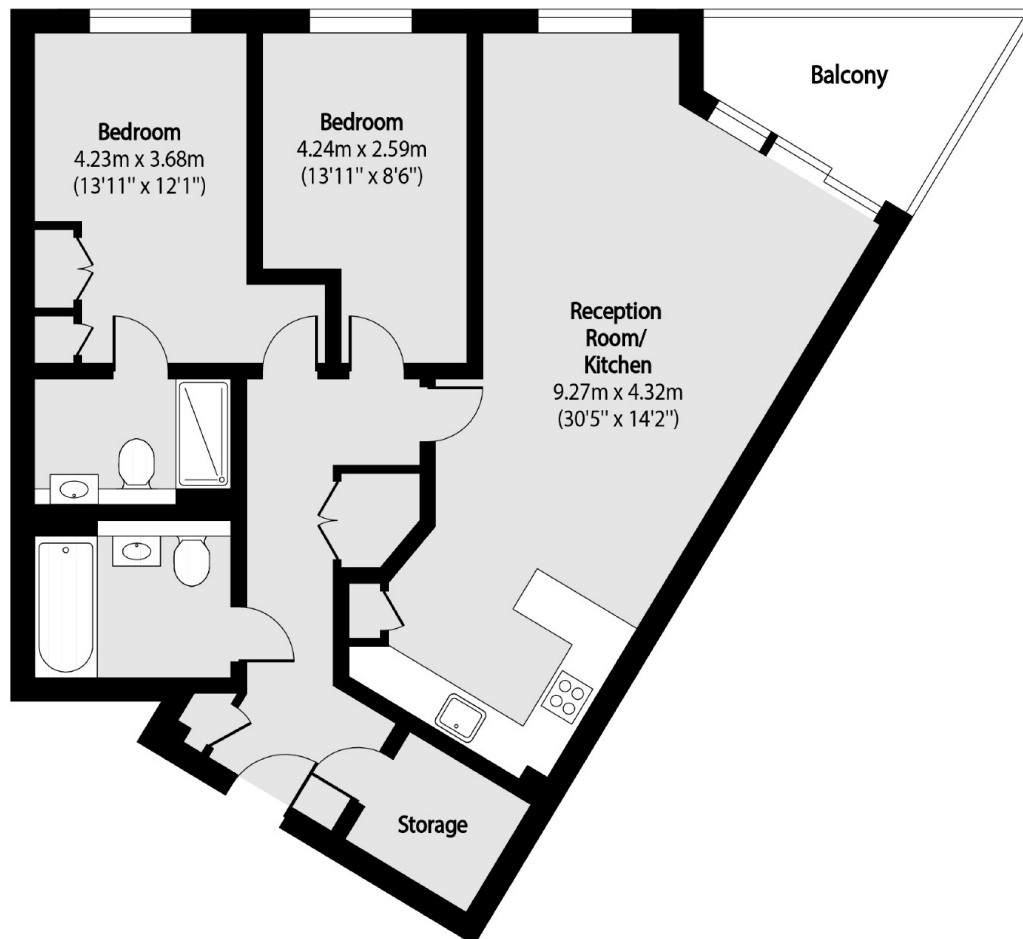
A beautifully bright two double bedroom apartment located within the luxurious Beaufort Park development. This spacious home comes with two bathrooms, a private parking space and a south-facing private balcony.

Situated in the heart of Colindale and just moments from Colindale tube station (Northern Line) as well as numerous eateries, shops and other local amenities. Includes access to on-site members only gym/spa.

Features

- Two Double Bedrooms
- South-Facing Balcony
- Private Secure Parking Space
- Two Bathrooms
- Stunning Views
- Luxury Spa & Gym

Aerodrome Road, London, NW9



Total area (approx): 83.38 sq m (897 sq. ft)

Balcony total area (approx): 6.27 sq m (67 sq. ft)

Dexters

Hendon
18 Central Circus
London
NW4 3AS
Sales
020 8545 8586

Energy Rating: B. We aim to make our particulars both accurate and reliable. However they are not guaranteed; nor do they form part of an offer or contract. If you require clarification on any points then please contact us, especially if you're traveling some distance to view. Please note that appliances and heating systems have not been tested and therefore no warranties can be given as to their good working order.

 **RICS** | Regulated
Estate Agent
and Letting Agent

[dexters.co.uk](https://www.dexters.co.uk)